

YOUR FUTURE
MADE HERE
YOUR FUTURE MADE
HERE MADE
**YOUR FUTURE.
MADE HERE.**
YOUR FUTURE
MADE HERE
YOUR FUTURE MA
DE HERE MADE
HERE. YOUR FU



WHY SHOULD I STUDY AT BRIGHTON MET?

1. PART OF A HIGH-PERFORMING GROUP OF COLLEGES

Brighton MET is part of the Chichester College Group (CCG). Prior to our merger in August 2022, CCG was rated 'Outstanding' by Ofsted (May 2020).



2.

COURSES DESIGNED BY INDUSTRY LEADERS

Our courses are designed in collaboration with local employers and industry experts to ensure that our curriculum is at the cutting edge.

3.

A FOCUS ON YOUR FUTURE

Your study programme, will be tailored to your individual educational needs. The college has fantastic links with local employers and our dedicated careers and employability team can help you plan for the future.

4.

INSPIRING TEACHING FROM EXPERT STAFF

Our staff are passionate about their subjects, with a wealth of industry experience making them experts in their field. Our teaching and support staff strive to give you the absolute best experience at college.

5.

SPECIALIST FACILITIES

Our facilities are unmatched in the local area, including:

- > £21 million Centre for Creative and Digital Industries.
- > £9 million Construction and Trades Centre which mirrors true construction site workshops.
- > Brand new professionally equipped salons, allowing hairdressing and beauty students to offer treatments to the public.
- > Working restaurant, open to the public and run by hospitality and catering students.



6.

A SUPPORTIVE AND ENRICHING ATMOSPHERE

Starting college can be a little daunting; this is why creating a supportive environment is at the heart of what we do.

WELCOME



I'm delighted you are considering studying at one of our vibrant campuses across the city of Brighton and Hove.

Here at Brighton MET, you'll find a passionate community of staff who will inspire you, challenge you and support you as you strive towards achieving your ambitions.

We make a commitment to you to support you, to nurture your curiosity and help you to grow in confidence, providing you with the knowledge and skills to unlock your true potential.

Our excellent links with employers mean you will learn from industry experts, and we will work with you to ensure you are able to make the best choices for your own future – whether that's progressing to further study, gaining a place at university, starting an apprenticeship or entering employment in your dream career.

We believe in providing you with endless opportunities in an inclusive environment where everyone can be successful.

You'll find lots of information in this guide, and even more on our website. And we look forward to welcoming you soon to one of our open events, where you'll be able to look around our campus and see for yourself our fantastic facilities, meet our amazing staff and chat to our inspirational students.

Come to Brighton MET College and start your story of success!

Paul Riley,
Principal

CONTENTS

OUR COURSES

Business & Travel	14
Catering & Hospitality	28
Construction	32
Childcare & Social Care	38
Creative Industries	48
Hair & Beauty	72
Sport	86
Inclusion	102



Disclaimer: All information stated in this guide is correct at the time of printing (August 2023) and is subject to change without notice

INFORMATION

Welcome from Our Principal	4
Introduction to Course Types	6
Entry Requirements	8
How to Apply	10
Our Courses	12
T Levels	92
Apprenticeships	96
Higher Education	98
Access to Higher Education	100
English and Maths	101
Chichester College Group (CCG)	106
Key Dates	108
Everything Else You Need to Know	109
Financial Help	110
Course Fees	111
Supporting You	112
Additional Learning Support	114
Preparing You for Your Future	116
Facilities: Central Brighton	118
Facilities: East Brighton	120
Student Life	122
Your College, Your Voice	124
How to Find Us	126
College Highlights	127

Visit our new website:
brightonmet.ac.uk

INTRODUCTION TO

COURSE TYPES

There are lots of options available to you when you leave school - with a vast range of courses in a variety of subjects. So, where do you start?



WHEN CHOOSING A COURSE, IT'S WORTH CONSIDERING:

- > What do you want to achieve?
- > What type of career do you want?
- > What subjects do you enjoy?
- > What are your strongest subjects?
- > Do you prefer hands-on or classroom-based learning?
- > How much work experience do you want?

We offer a range of courses from entry level to university-level, including vocational certificates and diplomas, T Levels, Access to HE and apprenticeships. We also offer functional skills qualifications and GCSE maths and English.

Our admissions team can provide advice depending on your interests, predicted GCSE results and plans for the future. And we'd really recommend visiting us at one of our open events to find out more about our courses and our college!

Here's a short guide to help you understand the different pathways, which could help you to decide which type of course is right for you.

A-LEVELS

Subject-based level 3 qualifications, A-levels are ideal if you want to study more than one subject, as you can normally pick two or three subjects.

They are studied across two years and are graded A*-E, with your grades being determined by your final exam results at the end of your second year. While we don't offer A-levels here at Brighton MET College, you'll find a wide range of A-levels at our sister colleges in Chichester, Haywards Heath and Worthing.



T LEVELS

These are newer qualifications, which launched in 2020 and have been developed with employability in mind – helping you to build the skills industry need.

T Level qualifications are equivalent to three A-levels and are studied across two years. You'll receive split learning, spending roughly 80% of your time in the classroom and 20% on an industry placement.

You can discover more about T Levels on pages 92-95.

VOCATIONAL

Vocational courses, which include UAL, City & Guilds and BTEC diplomas and NVQs, are great for students who prefer practical learning – and they are highly respected by employers.

They relate to a particular profession, area of work or technical skill. You'll study one subject, gaining the skills and knowledge you need for that chosen occupation. You'll be taught in our specialised facilities by our fantastic staff – all industry experts.

Vocational courses can be taught at different levels (depending on subject area and course availability), including:

LEVEL 3

Level 3 extended certificates are equivalent to one A-level, diplomas are equivalent to two A-levels, while level 3 extended diplomas are equivalent to three A-levels.

How you'll be assessed will vary depending on the specific courses. Generally, it will be through a combination of practical assessments, projects, coursework and tests throughout the duration of your course.

LEVEL 2

Level 2 vocational qualifications are a good progression route onto level 3 courses for students who may not meet the entry requirements, giving you practical training in your chosen skill or profession. A level 2 qualification is similar to having GCSE grade equivalents at grades 4 or higher.

LEVEL 1

Suitable for students who haven't quite achieved the entry requirements for a level 2 course or higher, these courses will give you a grounding in your chosen subject and help you to progress onto level 2 courses. Generally speaking, a level 1 qualification is similar to having GCSE grade equivalents at 1-3

ENTRY LEVEL

An entry level vocational course generally has no, or low, formal entry requirements, and can be ideal for starting your training while developing your maths and English skills.

ENTRY REQUIREMENTS




The information below outlines the entry requirements you'll generally need to be accepted onto the courses that we offer, however some courses may have additional requirements such as specific qualifications in relevant subjects, a portfolio of work, completion of a technical test or audition.





This specific information can be found on the individual course pages on our website.

You will have a course interview or application review meeting, a one-to-one conversation that provides more information and ensures you find the right course for you.

We are an inclusive college, which means we will do everything we can to ensure that all applicants will have a place on a course at our college; the level of study will be dependent on prior achievement and GCSE results.



LEVEL	ENTRY REQUIREMENTS	PROGRESSION
 ↓	<ul style="list-style-type: none"> > No formal qualifications required > College readiness and skills level will be assessed at interview 	<ul style="list-style-type: none"> > Level 1
 ↓	<ul style="list-style-type: none"> > At least two GCSEs grade 2 or above, or an achievement of an Entry level qualification in a relevant subject > Some courses may require GCSE maths or English at grade 1 or above 	<ul style="list-style-type: none"> > Level 2 > Intermediate Apprenticeship > Employment
 ↓	<ul style="list-style-type: none"> > At least three GCSEs grade 3 or above, including maths and English > Some courses may require GCSE maths or English at grade 1 or above 	<ul style="list-style-type: none"> > Level 3 > Advanced Apprenticeship > Employment

LEVEL	ENTRY REQUIREMENTS	PROGRESSION
	<p>Level 3</p> <ul style="list-style-type: none"> > At least four GCSEs grade 4 or above, including maths and English or completion of relevant level 2 qualification at merit or above > Some courses may require specific GCSEs in relevant subjects at grade 4 or above <p>A-levels</p> <ul style="list-style-type: none"> > To study A-levels, you'll need at least five GCSEs at grade 4 or above, including maths and English. GCSEs at grade 4 or above in relevant subjects may also be required for some subjects <p>T Levels</p> <ul style="list-style-type: none"> > To study T Levels, you'll need at least five GCSEs at grade 4 or above, including maths and English <p>Access to HE (19+)</p> <ul style="list-style-type: none"> > To study Access to HE, you'll generally need GCSE maths and English language at grade 4/C or above. Some subjects will also require GCSE grade 4/C or above in science 	<ul style="list-style-type: none"> > Level 3 (year 2) > Level 4 or 5 > Degree-level courses > Higher Apprenticeship > Employment
	<p>Higher National Certificate (equivalent to the first year of a Bachelor's Degree), NVQ/BTEC Level 4, Professional Award</p> <ul style="list-style-type: none"> > Relevant Level 3 qualification or A-levels in relevant subjects (minimum grades vary by course) > At least five GCSEs at grade 4 or above including maths and English 	<ul style="list-style-type: none"> > Level 5 > HND/Foundation Degree > Higher Apprenticeship > Employment
	<p>Higher National Diploma (equivalent to the second year of a Bachelor's Degree), Foundation Degree</p> <ul style="list-style-type: none"> > Relevant Level 4 qualification or second year progression from the related level 4 course > Relevant Level 3 qualification or A-levels in relevant subjects (minimum grades vary by course) > At least five GCSEs at grade 4 or above including maths and English 	<ul style="list-style-type: none"> > Level 6 > Top Up Degree > Employment
	<p>Top Up Degree or Bachelor's Degree</p> <ul style="list-style-type: none"> > Relevant Level 5 qualification or prior learning/experience in a related subject > Relevant Level 3 qualification or A-levels in relevant subjects (minimum grades vary by course) > At least five GCSEs at grade 4 or above including maths and English 	<ul style="list-style-type: none"> > Masters Degree > Employment

HOW TO APPLY

Choosing and applying for your course may seem a little daunting, but don't worry – we're here to guide you through the process.

The easiest way to apply is online, by visiting our website. Here you can search for the subjects you're interested in and discover more about the course including specific entry requirements.

TOP TIP

If you can, use a personal email address for your application, not your school email – we'll be sending important information in the summer months to you by email, so you'll need to use an account that you have access to after you leave school.

SET UP YOUR ACCOUNT

1

You'll be prompted to create an account which will allow you to log in to our Application Tracker website whenever you wish. This will provide you with important information and you can also track the progress of your application.

APPLY

2

Complete each step of the application form and then submit your completed form. We'll let you know when we've safely received it with an acknowledgement email.

APPLICATION REVIEW MEETING

3

Before offering you a place a college, we'll meet with you (either in person, by telephone or online). We'll send you a link to our booking page where you can select a time that's convenient for you.

ACCEPT YOUR PLACE

4

Offers will be sent to you via the email address you have provided. The offer will be conditional, based on predicted GCSE grades. You'll need to accept your offer within 14 days to secure your place.

WHAT NEXT?

5

Once you receive your GCSE results, you'll need to get in touch with the college to inform us of them and start your enrolment process. You'll find out more about this in our application timeline on page 108.



WHAT'S AN APPLICATION REVIEW MEETING?

Don't worry! Our Application Review Meetings are supportive one-to-one meetings designed to make sure the course you've applied to is right for you, find out more about you – and give you the opportunity to ask any questions you may have.

You don't have to come alone, if you feel more comfortable bringing someone with you that's totally ok.

WHAT IF I CHANGE MY MIND?

If you realise the course you've applied for isn't right for you, just get in touch. There are lots of options and we can help you find the right one for you.

EXPERIENCE BRIGHTON MET

The best way to find out about the college is to visit us! Make sure you come along to one of our open events to meet our teaching staff, discuss your options and see the college, even meet some of our students. You'll find dates on the back cover of this guide, or on our website.

GET IN TOUCH

If you have any questions or concerns, our admissions team will be happy to help you.

Call: 01273 667704

Email: admissions@gbmc.ac.uk



OUR COURSES

A-Z LIST

- A** > Air Cabin Crew & Aviation Operations on the Ground (Knowledge) 2 C
- > Art & Design 1 2 3 C
- > Art & Design Foundation 4 C

- B** > Barbering 2 C
- > Beauty Therapy 1 2 3 4 C
- > Beauty Therapy T Level 3 C
- > Boxing Academy E
- > Business & Travel 1 C
- > Business 2 3 C

- C** > Carpentry & Joinery 2 3 E
- > Computing & Digital Technologies 2 3 C
- > Construction T Level 3 E
- > Childcare 1 2 C
- > Creative Enterprise 3 C
- > Creative Media 3 C
- > Customer Service and Property Services 2 C

- D** > Digital Business Services (Computing) T Level 3 C
- > Digital Support Services (Computing) T Level 3 C
- > Digital Marketing 3 C

- E** > Education & Early years 2 C
- > Education & Early Years T Level 3 C
- > Electrical Installation 1 2 3 E

- F** > Fashion Design & Business 3 C
- > Film & Broadcast 3 C

- G** > Games, Animation & Visual Effects 3 C

- H** > Hair & Media Makeup 2 3 C
- > Hairdressing 1 2 3 C
- > Hairdressing T Level 3 C
- > Health & Social Care 1 2 3 C
- > Health and Science T Level 3 C

- I** > Inclusion

- M** > Inclusion Media, Broadcast & Production T Level 3 C
- > Multi-trade Construction 1 E

- P** > Photography 3 C
- > Photography Foundation 4 C
- > Plumbing 1 2 E
- > Professional Cookery 1 2 3 C

- S** > Sport 1 2 3 E

- V** > Visual Merchandising 2 3 C

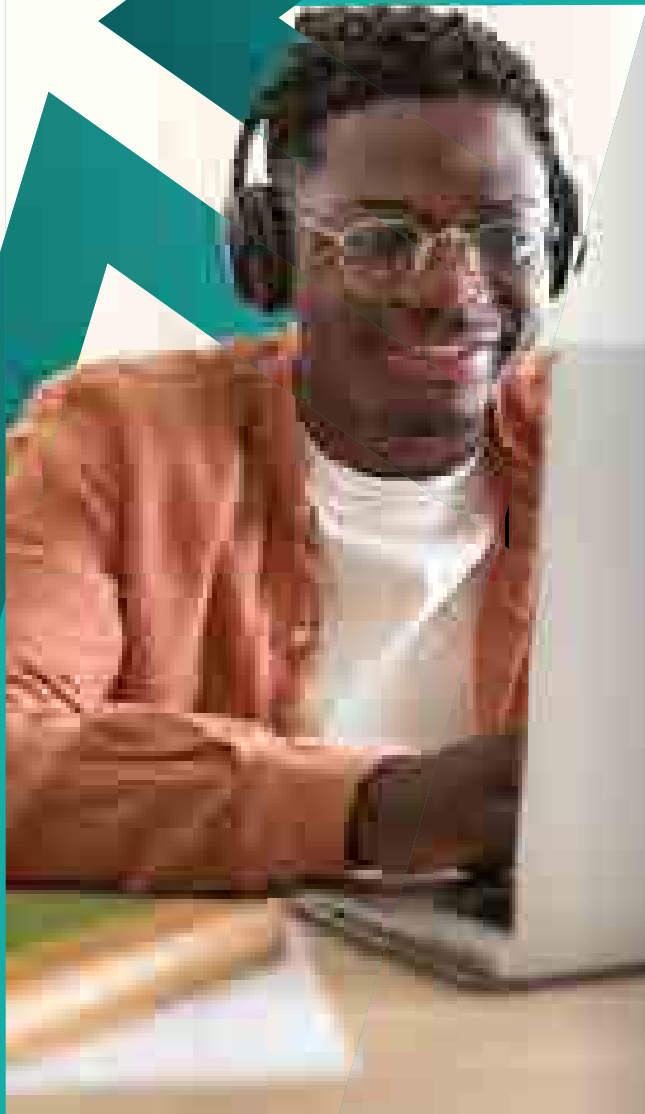
Levels offered

1 2 3 4

Campus

C Central Brighton E East Brighton

BUSINESS, COMPUTING & TRAVEL



Get down to business and get ready for success

The world of business is varied, fast-paced and at the heart of the global economy.

Whether you want to start your own business, lead a company or pursue a career in law, human resources, marketing or accountancy – it all starts with the fundamentals of business and management.

The sky's the limit!

Jobs in the travel & tourism industry can lead to exhilarating careers, travelling the globe and experiencing new things every day.

With courses that provide a gateway into the industry, you'll develop a broad understanding of the travel & tourism sector, discovering more about destinations and the impact tourism has around the world, emerging trends as well as crucial customer service skills.

BRITISH AIRWAYS VISIT

Our cabin crew students visited British Airways' training base and were able to gain hands-on experience in the fire fighting suite and participated in slide descent training.



Time to start up your career in this ever-changing industry

If you want a career where you'll be in demand, working in a fast-paced and constantly evolving industry, then choosing a course in computing, digital and IT is most definitely for you.

There is always a high demand for excellent IT technicians in this developing industry. Whether you want to work as a computer games developer, network engineer or a web developer, a wide range of sectors awaits.

FACILITIES

As a cabin crew student you will have access to aircraft seats, trolleys and equipment that are used regularly for training.

Business and computing students have access to high quality learning resources in our brand new IT suites at our Central Brighton Campus.

CAREERS SPOTLIGHT

Marketing manager:
£27,000 – £65,000

Responsible for overseeing how products and services are promoted to customers.

Business analyst:
£22,000 – £55,000

Business analysts work with organisations to help them change and improve.

Cabin crew:
£15,000 – £30,000

Air cabin crew help make sure that airline passengers have a comfortable, safe and pleasant flight.

National Careers Service, 2023

Visit our new website:
brightonmet.ac.uk



COMPUTING & DIGITAL TECHNOLOGIES

Computing and digital skills are essential in almost every industry and business. Our courses have been designed in collaboration with industry experts to ensure we deliver the latest knowledge in areas such as computer hardware, computer networks, cyber security, cloud computing, and virtual and augmented reality.

We are also offering two T Level qualifications in computing. These courses will develop your technical knowledge and skills and include an industry placement in the digital sector.

WHAT LEVEL CAN I JOIN?

Level 2

Level 2 Diploma in Computing & Digital Technologies (awarded by Cambridge Technicals)

Entry requirements:

At least three GCSEs at grade 3 or above, including English and maths.

Length: 1 year

Level 3

Level 3 Introductory Diploma and Extended Diploma in Computing and Digital Technologies (awarded by Cambridge Technicals)

Entry requirements:

At least four GCSEs at grade 4 or above, including English and maths.

Length:

Year 1: Diploma

Year 2: Extended Diploma

T-LEVELS

NEW

Level 3

T Level Digital Business Services (Computing)

Entry requirements: At least five GCSEs at grade 4 or above, including English, maths and IT.

Length: 2 years

T Level Digital Support Services (Computing)

Entry requirements: At least five GCSEs at grade 4 or above, including English, maths and IT.

Length: 2 years



KEY FEATURES

Well-equipped computer labs with Intel i7 PCs with 16GB RAM

Wide variety of the latest applications, software and development platforms

Access to full administrator rights on a development network

Strong ties with industry and work experience opportunities

WHAT'S NEXT?

You will be ready for a career in computing and IT or, if you have successfully completed the Level 3 Extended Diploma, prepared for your move into higher education (see page 98 for options at Chichester College Group).

FUTURE CAREERS

Business analyst

Cyber security

Desktop support

Digital forensic analyst

Games developer

IT support

Network engineer / technician

Server support

Software engineer / developer

Web developer



Central
Brighton
Campus

A photograph of four students sitting around a table in a meeting. A woman in a blue shirt is leaning over the table, pointing at a laptop screen. A woman in a green shirt is looking at the screen. A woman in a yellow shirt is looking at the screen. A man in a dark shirt is looking at the screen. The table has a laptop, papers, and a white bowl. The background is a blurred indoor setting.

GET STARTED

IN BUSINESS, TRAVEL AND IT

CAN I JOIN THIS COURSE?

Level 1

Level 1 Certificate – Get Started in Business & Travel

Entry requirements:
At least two GCSEs at grade 2 or above, preferably including English and maths.

Length: 1 year

An introduction to the areas of business, travel and tourism. This course supports you in developing your self-esteem and includes careers guidance and skills such as how to apply for jobs and do well in an interview. After this course, you will have the knowledge and confidence needed to move on to higher level courses or in to work.

KEY FEATURES

Individual support

Learn organisational skills

Develop customer service and digital skills

Work with others

Build your confidence

FUTURE CAREERS

Office administrator

Retail worker

Marketing assistant

Travel agent assistant

WHAT'S NEXT?

On successful completion, you can progress to one of our Level 2 courses in Business, Travel or Computing.





BUSINESS

This course will provide you with the relevant skills to pursue a career in business or work with a social enterprise, start-up or a large corporate company. You'll develop a range of digital and practical skills, as well as theoretical knowledge in the areas of enterprise, finance, marketing and team building in business.

KEY FEATURES

Individual support

Learn organisational skills

Develop customer service and digital skills

Work with others

Build your confidence

WHAT LEVEL CAN I JOIN?

Level 2

NCFE Level 2 Diploma in Skills for Business

Entry requirements:

At least three GCSEs at grade 3 or above, including English and maths. If you do not have these grades you can start at Level 1 (see page 18).

Length: 1 Year

Level 3

OCR Level 3 Extended Certificate / Diploma in Business

Entry requirements:

At least four GCSEs at grade 4 or above, including English Language and maths.

Length:

Year 1: Extended Certificate

Year 2: Diploma



FUTURE CAREERS

Marketing or advertising

Accounting or finance

Customer service / Human resources

Entrepreneur / small business owner

WHAT'S NEXT?

You will be ready for a career in business. If you have successfully completed the Level 3 Diploma, you could apply to a university-level course.

See page 98 for options at Chichester College Group

STUDENT SPOTLIGHT

Anish studied Level 3 Business and has now applied for university. He hopes to become a chartered accountant.

“I didn't know where I was heading in my academic study when I first joined, but studying business at Brighton MET has led me to discover my passion, which turns out to be finance.”





ESTATE AGENCY & PROPERTY SERVICES

This is a one year course combining customer and property services, providing an excellent foundation in the skills and knowledge required for a career in this industry. As part of the programme of study, you will work towards a Level 2 Award in Sales or Lettings. This nationally-recognised qualification is accredited by Propertymark Qualifications, the UK's specialist awarding organisation.

As part of the programme of study you will learn about sales and lettings and have the opportunity to carry out work related experiences with local estate & letting agents.

KEY FEATURES

Industry-experienced teachers

Guest speakers

Attend property events and masterclasses

Valuable work experience opportunities with local employers

WHAT LEVEL CAN I JOIN?

Level 2

City & Guilds Level 2 Certificate in Customer Service and Level 2 Property Services

Entry requirements:
At least 3 GCSEs at grade 4 or above including English Language. If you do not have these grades you can start at Level 1 or Level 2 Business.

Length: 1 year

FUTURE CAREERS

Local estate agent

Overseas estate agent

Customer service roles

Property expert

WHAT'S NEXT?

After completing this course you will be ready to enter employment and find a job working in the property sector. You can also progress on to other study programmes or an apprenticeship.





This course will develop your skills and knowledge to be at the front end of planning events, festivals and delivering customer service to domestic and international tourists.

This course will leave you with the skills, confidence and most importantly, the experience to progress into employment or further your skills through study.

This practical course will extend your skills in customer service and provide you with the opportunity to work with local employers to plan and run an event! This course will prepare you for work in hotels, tourism, attractions, festivals and other events.

WHAT LEVEL CAN I JOIN?

Level 3

NCFE Level 3 Certificate in Tourism (with Conference & Events)

Entry requirements:

At least four GCSEs at grade 4 or above, including English Language and maths.

Length: 1 year



KEY FEATURES

Strong ties with industry and visits from employers

Industry-experienced teaching staff

Trips and visits

Work experience opportunities

FUTURE CAREERS

Conference / festival or event planner

Hospitality

Tour operations

Visitor attractions

Cruise or airline industry

Tourism management

WHAT'S NEXT?

You will be ready for a career in the events, customer service or travel industry. If you have successfully completed an Extended Certificate you may have the option to move into higher education.





CABIN CREW & AVIATION OPERATIONS

An internationally recognised qualification designed for those who would like a career in the exciting cabin crew, aviation and travel & tourism industry. Learn from our industry-experienced staff who will help you to develop a range of desirable transferable skills.

We have excellent links with industry, which means that you'll take part in enrichment activities such as safety training at Heathrow Airport and presentations from leading airlines.

WHAT LEVEL CAN I JOIN?

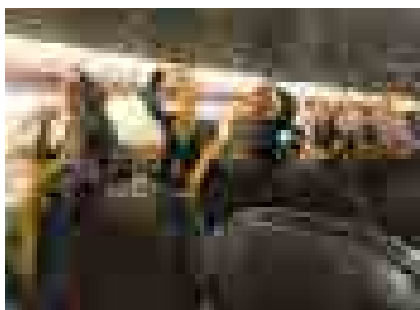
Level 2

City & Guilds Level 2 Certificate in Air Cabin Crew & Certificate in Aviation Operations on the Ground (Knowledge)

Entry requirements:

At least three GCSEs at grade 3 or above, preferably including English and maths. If you do not have these grades, start at Level 1 (page 18).

Length: 1 year



KEY FEATURES

Airline assessment days and work experience opportunities

Industry-experienced teachers and guest speakers

Practical training in an aviation centre on college premises

Customer service training

FUTURE CAREERS

Cabin crew

Working on cruise liners

Airport ground operations

Customer relations

Travel rep or tour guide

Tourism management

WHAT'S NEXT?

You will be ready for a career in the aviation industry or prepared for further study.

STUDENT SPOTLIGHT

Mia (former cabin crew student) developed her resilience and self-awareness on the course. She has successfully completed her studies and was offered a job at easyJet before her course ended. Her contract to start training/flying began in August 2023.



CATERING & HOSPITALITY



Serve up **success** with a career in the **hospitality industry**

A career in this industry requires passion and hard work – qualities reflected by our expert tutors, all of whom have extensive professional experience. The work is challenging but highly rewarding, and our programme of study will unlock your potential and give you the confidence to take your skills in to your dream job.

CHEF'S ACADEMY

Five of Brighton MET's catering students were accepted onto the prestigious Exclusive Hotels Chef's Academy.

Moustapha, Joe, Nathan, Harvey and Henry were all selected after a very tough application process. After two interviews, a demonstration of their cooking skills, and a cook-off judged by Michelin starred chefs, these five students were chosen to become academy trainees.

The Academy was established to train passionate chefs of the future and only accepts ten student chefs each year, out of over 100 applicants.

These talented trainee chefs join 20 other students who have been accepted onto the programme from Brighton MET since the Academy began. At the end of this two-year programme, the trainees will have the opportunity to become a chef de partie, a position that would normally take up to five years in industry.



FACILITIES

Our catering & hospitality department benefits from modern facilities such as industry-standard training kitchens, as well as our on-site restaurant, The Gallery, which is staffed by students and open to the public at our Central Brighton Campus.

Throughout your course, you will work in a realistic training environment and you will have plenty of opportunities to learn techniques and tricks of the trade that are essential for a successful career in this fun and fast-paced industry.



CAREERS SPOTLIGHT

Chef:

£15,000 – £30,000

Prepares, cooks and presents food in bars and restaurants. May supervise kitchen staff and ensure health & safety and food hygiene standards are met.

Restaurant manager:

£18,000 – £28,000

Plans the day-to-day running of the restaurant, ensuring quality standards of meals are met and customers are happy.

National Careers Service, 2023

Visit our new website:
brightonmet.ac.uk



This course will help you progress to advanced chef training or start your cookery career. You will explore food and product development, and learn the technical skills required for professional preparation of vegetables, meat, poultry, game and fish.

To gain experience of a real working environment, you will work in our training restaurant and complete a work placement. This course will also develop your customer and food service skills, including bar service, silver service and table theatre in our on-site restaurant.

KEY FEATURES

Train in professional industry-standard kitchens

Tutors with industry experience

Visits to hotels and restaurants

Serving experience in our public restaurant

“The main reason for me choosing the MET was the opportunity to do a service using the college restaurant, as it helped to give me an insight into a normal kitchen.”

Lizzie, Level 3 Professional Cookery
(Now a junior sous chef)

FUTURE CAREERS

Chef de partie

Restaurant manager

Sous chef

Bartender

Head chef

Front-of-house

Caterer

Cook

WHAT'S NEXT?

On successful completion of the Level 3 course, you can continue your studies, start an apprenticeship or seek employment.



WHAT LEVEL CAN I JOIN?

Level 1

City & Guilds Level 1 Diploma in Introduction to Professional Cookery

Entry requirements:

At least two GCSEs at grade 2 or above, preferably including English and maths

Length: 1 year

Level 2

City & Guilds Level 2 Diploma in Professional Cookery

Entry requirements:

At least three GCSEs at grade 3 or above, including English and maths.

Length: 1 year

Level 3

City & Guilds Level 3 Diploma in Professional Cookery (Kitchen & Larder)

Entry requirements:

Completion of a relevant Level 2 course or significant industry experience. GCSE English and maths are required.

Length: 1 year

CHILDCARE AND HEALTH & SOCIAL CARE



**Make a difference
with a career that
puts others first**

If you are hardworking, patient and love working within the community, then our childcare or health & social care courses could be for you. We work closely with local employers to ensure that our study programmes meet their needs and our tutors will be able to share their professional industry experience with you.

“During my second year I was offered a job three days a week at the nursery I was on placement with. **Now I’m fully qualified**, I’m working **full-time** as a key worker in the preschool room and loving every minute of it. That is all down to the **teacher’s support and guidance** on the course.”

Sophie, Level 3
Early Years and Childcare



CAREERS SPOTLIGHT

Midwife:

£27,055 to £47,672

Midwives provide advice, care and support for women and their babies during pregnancy, labour and the early postnatal period.

Primary school teacher:

£28,000 to £43,685

As a primary school teacher, you’ll facilitate learning, helping to develop skills and social abilities in children.

Social worker:

£27,000 to £42,000

Social workers help to protect vulnerable children and adults, and support people to live independently.

National Careers Service, 2023

WORK PLACEMENTS

Brighton MET is proud to work within the local community and has established links all over Sussex with hospitals, schools and nurseries, where students experience the childcare and social care sectors first-hand.

Regular placements with these organisations give our learners the opportunity to work with potential future employers and gain the skills and confidence required for this challenging and rewarding industry. An enhanced DBS check is required to be able to go out on placement – we will help you to organise this.

If you’re studying Level 3 Health & Social Care, you’ll have opportunities for work experience with the Sussex Partnership NHS Foundation Trust. They work closely with the College as part of the Health & Care Academy, introducing you to a wide range of careers in healthcare.

FACILITIES

Health and social care students have access to our industry standard equipment to develop practical, vocational skills.

Childcare students have the opportunity to take part in creative childcare activities, including: arts and crafts, making playdough and slime, and creating classroom displays for early years settings.

Visit our new website:
brightonmet.ac.uk



EARLY YEARS & CHILDCARE

Our early years department has an excellent track record of student progression to employment or university. You'll learn about caring for children from birth to seven years of age, linking classroom theory with hands-on experience through regular work placements.

KEY FEATURES

Fantastic links with local hospitals, pre-schools and schools

Strong links with local charities, including Link Hope

Inspirational guest speakers

High progression rate to employment

Experience visits to local schools, ice skating and the Nursery World exhibition in London.

WHAT LEVEL CAN I JOIN?

Level 1

NCFE / CACHE Level 1 Certificate in Caring for Children

Entry requirements:
At least two GCSEs at grade 2 or above, preferably including English and maths. Plus, two references (one from working with children).

Length: 1 year

Level 2

CACHE Level 2 Certificate in Working with Children in Early Years and Primary Settings

Entry requirements:
At least three GCSEs at grade 3 or above, including English and maths. Plus two references (one from working with children) and an enhanced DBS.

Length: 1 year

T-LEVELS

NEW

Level 3

T Level Technical Qualification in Education and Early Years

Entry requirements:
At least five GCSEs at grade 4 or above, including English and maths.

Plus two references (one academic, one from working with children) and an enhanced DBS.

Length: 2 years

“The Level 3 Early Years course is fantastic to teach on. I see my students grow so much and develop into adults who are competent in working with children. The best thing about it is that students get to choose whether to use their qualification to gain direct employment or go on to university.”

Sam, tutor



FUTURE CAREERS

Nursery worker (early years educator)

Childcare / nanny

Teaching assistant or primary school teacher

Social / youth worker

Nursing or midwifery

WHAT'S NEXT?

You can apply to university after completing the T Level. Alternatively you can go in to full-time employment.



HEALTH & SOCIAL CARE

This course covers a wide range of subjects within health and social care and at Level 3 you can choose from a number of optional modules to specialise in, such as nursing, social work, paramedical training or occupational therapy. In addition to classroom learning, you will also undertake work placements to build up your practical experience.

KEY FEATURES

Fantastic links with local employers, including Sussex Partnership NHS Foundation Trust

Work placements provide practical experience

Inspirational guest speakers

High progression rate to employment

WHAT LEVEL CAN I JOIN?

Level 1

NCFE Level 1 Certificate in an Introduction to Health, Social Care & Children's & Young People's Settings

Entry requirements:
At least two GCSEs at grade 2 or above, preferably including English and maths.

Length: 1 year

Level 2

CACHE Level 2 Extended Certificate in Health & Social Care

Entry requirements:
At least three GCSEs at grade 3 or above, including English or maths.

Length: 1 year

Level 3

CACHE Level 3 Technical Certificate / Extended Diploma in Health / Social Care

Entry requirements:
At least four GCSEs at grade 4 or above, including English and maths and mandatory work experience.

Length:
Year 1: Technical Certificate
Year 2: Extended Diploma



We are proud to be working in partnership with Sussex Partnership NHS Foundation Trust to educate and support the next generation of healthcare workers through our Health and Care Academy.

The aim of the Academy is to further enhance the learning experience for students studying a number of healthcare courses including Level 3 Health & Social Care. As part of the Academy, you will work with professional mentors and access to guest lectures and workshops delivered by experienced NHS staff.

FUTURE CAREERS

Nursing or midwifery

Teaching

Health care, social or youth worker

Counselling

Physiotherapy / occupational therapy

Policing

Nutritionist

WHAT'S NEXT?

On successful completion of the Level 3 Extended Diploma or T Level, you could continue your studies with an apprenticeship in a health and social care role or apply to university. Alternatively, you could move in to full-time employment.

NEW

T-LEVELS

Level 3

T Level Health and Science

At least five GCSEs at grade 4 or above, including English and maths and mandatory work experience.

Length: 2 years

CONSTRUCTION & TRADES



**Build a
future you
can be
proud of**

Brighton MET offers fantastic facilities to students who wish to enter into the construction industry. Our team all have vast industry experience, which has maintained our high standards, excellent pass rates and allowed us to produce trade professionals who bring a high level of technical skill and confidence into the industry.



FACILITIES

Our East Brighton Campus houses exceptional specialist facilities. We have life-size, realistic training environments, such as scaffolding rigs, workshops and large working areas, all purpose built to recreate real-life working environments.

DECARBONISATION ACADEMY

We are excited to introduce our brand new Decarbonisation Academy at Brighton MET East Campus, this project is designed to offer a range of green construction courses with the goal of upskilling local workers. You will have the chance to work on our energy efficient bungalow and help us achieve our goal of reaching net zero.

Our two-bedroom bungalow on site allows realistic learning to take place in a typical dwelling with all the inherent energy efficiency problems the building poses. **Works will include:**

- > Installing solar panels on the roof
- > A wind generator in the garden
- > An air source heat pump
- > Fitting internal and external insulation
- > Underfloor insulation
- > Windows & doors, fenestration modifications
- > Rainwater harvesting

Live energy performance inspections will be carried out in the setting and the building will be used as a teaching space for a number of our construction courses.

CAREERS SPOTLIGHT

Construction site supervisor:
£25,000 - £45,000

Construction site supervisors manage staff and subcontractors on building sites.

Electrician:
£18,000 - £42,000

Electricians fit, service and repair electrical machinery, equipment, circuits and wiring.

National Careers Service, 2023

FUTURE CAREERS

Domestic / commercial / industrial carpenter

Bench joiner

Electrician / electrical engineer / installer

Painter and decorator

General builder

Plumber or heating engineer

Visit our new website:
brightonmet.ac.uk



East
Brighton
Campus



MULTI-TRADES

This course is the perfect starting point for a career in construction. You will gain a broad understanding of the basics of construction and a range of practical skills and knowledge. The course covers an introduction to general construction, health and safety plus an overview of carpentry, brickwork, plastering, decorating and tiling.

KEY FEATURES

Study in our purpose-built Construction and Trades Centre

Workshop facilities mirror real industry practice, using industry-standard tools

Industry-experienced tutors

Opportunity for work experience



WHAT LEVEL CAN I JOIN?

Level 1

Ascentis Level 1 Diploma In Skills for Employment in the Construction Industries

Entry requirements:

At least two GCSEs at grade 2 or above, preferably including English and maths

Length: 1 year

FUTURE CAREERS

Building renovation and remodelling

Building maintenance within a commercial / residential / retail or industrial setting

Become a team supervisor

Set up your own business

Property maintenance

WHAT'S NEXT?

This course is the perfect starting point for a career in the construction industry. On successful completion, you can progress to a Level 1 in: plumbing, electrical or carpentry and joinery.



East
Brighton
Campus

CARPENTRY & JOINERY

Studying carpentry & joinery at Brighton MET is fun, exciting and will leave you with skills, confidence and underpinning knowledge of construction in a wider context, as well as introducing the vital basics of carpentry and joinery. You will learn key practical skills in producing woodworking joints, maintaining and using hand tools, and preparing and using portable power tools.

KEY FEATURES

Purpose-built Construction and Trades Centre

Workshop facilities mirror real industry practice, using industry-standard tools

Opportunities for work experience

These courses will give you the skills that employers are looking for in the construction industry, as well as equipping you for further study

WHAT LEVEL CAN I JOIN?

Level 1

City & Guilds Level 1 Diploma in Carpentry & Joinery

Entry requirements:
At least two GCSEs at grade 2 or above, preferably including English and maths. If you do not have these grades, you can start on our Certificate in Carpentry & Joinery course and then progress on to the Diploma.

Length: 1 year

Level 2

City & Guilds Level 2 Diploma in Bench Joinery or Site Carpentry

Entry requirements:
You must have completed Level 1 Carpentry & Joinery.

Length: 1 year

T-LEVELS

Level 3

T Level Design, Surveying & Planning for Construction

Entry requirements:
You must have completed the Level 2 Diploma in Bench Joinery or Site Carpentry. Five GCSEs at grade 4 or above, including English and maths.

Length: 2 years



WHAT'S NEXT?

Upon successful completion of Level 3, you can progress to further study, an apprenticeship or seek employment.



FUTURE CAREERS

Residential or domestic carpenters

Commercial carpenter

Industrial carpenter

Bench joiner



ELECTRICAL

If you are interested in a career in the electrical industry, then these courses are a starting point to gain the experience and knowledge required before becoming a qualified electrician. Using a mix of taught sessions and project work, you will learn how to fabricate containment, install and terminate cables, inspect and test electrical installations, and diagnose and rectify electrical faults, as well as learning the underpinning industry regulations and electrical science.

“Each year we experience the joy of seeing confidence grow and skills develop in our students, as well as providing them with the opportunity to enter a trade that will provide an income for life.”

Mark, Teaching and Learning Manager

KEY FEATURES

Purpose-built Construction and Trades Centre

Industry-standard facilities and equipment

Expert lecturers with years of experience

Opportunities for work experience

WHAT'S NEXT?

After Level 3 you can progress to an NVQ or to an apprenticeship to gain the City & Guilds qualification required to be a fully qualified electrician.

FUTURE CAREERS

Electrician

Industrial installer

Project manager

Self-employment



WHAT LEVEL CAN I JOIN?

Level 1

City & Guilds Level 1 Diploma in Electrical Installation

Entry requirements:
At least two GCSEs at grade 2 or above, preferably including English and maths.

Length: 1 year

Level 2

City & Guilds Level 2 Diploma in Electrical Installation (Buildings & Structures)

Entry requirements:
You must have completed the Level 1 Diploma and have a grade 3 or above in GCSE English and maths.

Length: 1 year

Level 3

City & Guilds Level 3 Diploma in Electrical Installation (Buildings & Structures)

Entry requirements:
You must have completed the Level 2 Electrical Diploma.

Length: 1 year



PLUMBING

The growing plumbing industry offers financially rewarding careers. This course will equip you with the practical skills and knowledge needed to work in the industry and is designed to kick-start your career in plumbing or lead on to an apprenticeship.

The course includes work experience, enrichment activities and project work. You will learn about the structure of the construction industry, health & safety, and site preparation. The course involves both practical and theoretical learning.

KEY FEATURES

Study in our purpose-built Construction and Trades Centre

Workshop facilities mirror real industry practice, using industry-standard tools

Industry-experienced tutors

Opportunities for work experience

WHAT LEVEL CAN I JOIN?

Level 1

City & Guilds Level 1 Diploma in Plumbing

Entry requirements:
At least two GCSEs at grade 2 or above, preferably including English and maths.

Length: 1 year

Level 2

City & Guilds Level 2 Diploma in Plumbing

Entry requirements:
You must have completed a Level 1 Plumbing Diploma and have two GCSEs grade 9-2 or equivalent.

Length: 1 year

FUTURE CAREERS

Plumber

Self-employed plumber

Heating engineer

Hot / cold water systems designer

WHAT'S NEXT?

To be fully qualified you must complete an apprenticeship or an NVQ competency qualification. You can complete a gas foundation course following the Level 2 Plumbing Diploma.



CREATIVE INDUSTRIES



ual: awarding
body

Get creative with your future career

The city of Brighton is renowned for its artistic community and cool, creative vibe. In our Creative and Digital Industries department, we are very much a part of that exciting community and aim to provide all our creative students with the perfect setting in which to develop their artistic skills and individual creativity.

We will help you to develop your employability skills, through exciting live projects and partnerships with employers, crafts people, designers and other creatives based in Brighton and beyond.

Throughout the year you can expect to join-in a variety of events such as exhibitions, collaborations, competitions and live shows that you can be a part of too. The academic year ends on a high with our legendary Summer Show where all our creative and digital students showcase their work to invited guests and the wider public.

Anything is possible

Our students collaborated with local marketing agency 'Anything is Possible' to design a sweatshirt as part of a branded merchandise campaign.

The winner of the sweatshirt design prize and runners-up had their designs produced and featured in the agency's online shop, with all proceeds from the merchandise sales going to charity.

By going into partnership with a growing local business, we gave our students a taste of professional life as a designer.



WHY UAL?

Our creative industries courses are awarded by University of the Arts London. This provides:

- 1 A high quality learning experience. UAL are one of the world's leading providers of art degrees.
- 2 Courses designed by experts. Our teaching meets the needs of the industry.
- 3 Excellent progression opportunities. Many students stay with us to complete a UAL validated creative arts degree.

FACILITIES

Our extensive range of specialist art studios and workshops are spacious and well-equipped.

Our digital arts facilities are top-of-the-range and include a graphic design suite, 3D multimedia suite with motion capture, video studio and equipment, plus traditional dark rooms for photography.

We also have Brighton's most affordable art shop right here on campus.

CAREERS SPOTLIGHT

Web designer:

£18,000 – £40,000

Designs web pages including graphics, animation and functionality to client requirements.

Art gallery curator:

£18,000 – £40,000

In charge of selecting, acquiring and displaying exhibits for museum and galleries.

Photographer:

£17,250 – £45,000

Takes commercial photographs for clients.

National Careers Service, 2023

Visit our new website:
brightonmet.ac.uk



ART & DESIGN

Based within the exciting and vibrant Creative Industries department, our art and design courses provide you with the opportunity to build your skills in a wide variety of subjects including drawing, photography, painting, printmaking, 3D, textiles, fashion, graphics, illustration and digital skills. You will be encouraged to experiment with a range of techniques and processes in order to find your area of specialism.

KEY FEATURES

Opportunities to gain valuable work experience with external clients

Highly experienced teaching team

Strong track record of progression to prestigious universities

Fantastic facilities and your own studio space

WHAT LEVEL CAN I JOIN?

Level 1

UAL Level 1 Diploma in Art, Design & Media

Entry requirements:

At least two GCSEs at grade 2 or above, preferably including English and maths, and a portfolio of your creative work.

Length: 1 year

Level 2

UAL Level 2 Diploma in Art & Design

Entry requirements:

At least three GCSEs at grade 3 or above, including a creative subject, English and maths, and a portfolio of your creative work.

Length: 1 year

Level 3

UAL Level 3 Diploma / Extended Diploma in Creative Practice: Art, Design & Communication

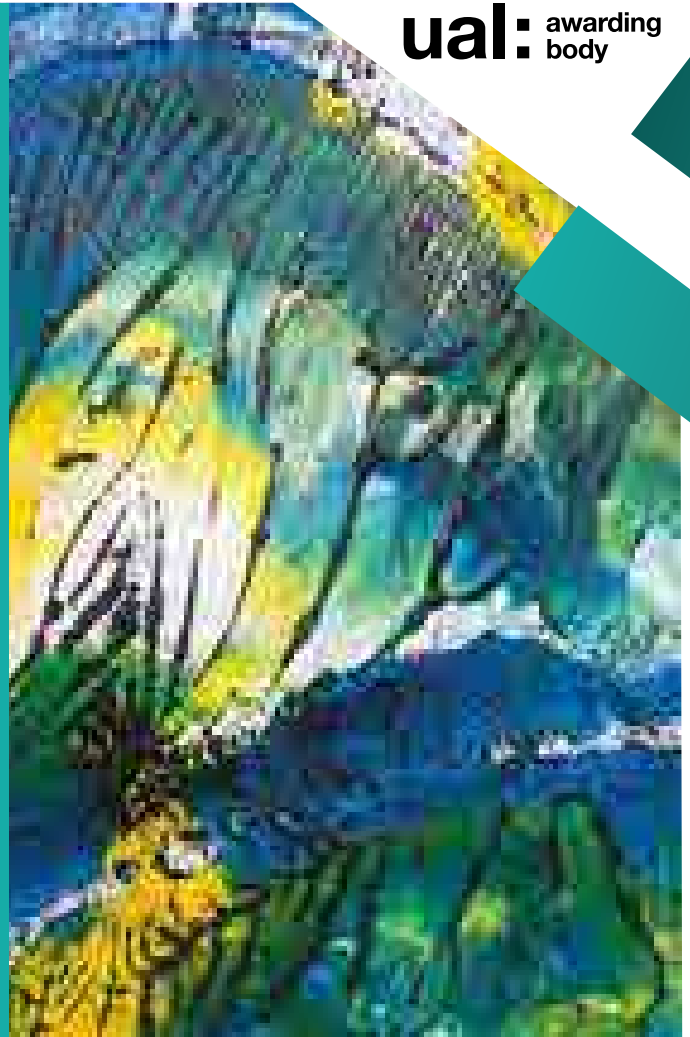
Entry requirements:

At least four GCSEs at grade 4 or above, including English, maths and a creative subject, plus a portfolio of your creative work.

Length:

Year 1: Diploma

Year 2: Extended Diploma



FUTURE CAREERS

Artist

Fashion or textile
designer

Product designer

Jewellery maker

Art teacher

Museum or gallery
curator

Freelance artist

Freelance craftsperson



WHAT'S NEXT?

On successful completion of the Level 3 Extended Diploma, you could progress to a university-level course, start an apprenticeship or seek employment.



**CREATIVE
MEDIA**

WHAT LEVEL CAN I JOIN?

Level 1

UAL Level 1 Diploma in Art, Design & Media

Entry requirements:

At least two GCSEs at grade 2 or above, preferably including English and maths, and a portfolio of your creative work.

Length: 1 year

Level 2

UAL Level 2 Diploma in Creative Media Production & Technology

Entry requirements:

At least four GCSEs at grade 3 or above, including a creative subject, English and maths, and a portfolio of your creative work.

Length: 1 year

Level 3

UAL Level 3 Diploma / Extended Diploma in Creative Media Production & Technology

Entry requirements:

At least four GCSEs at grade 4 or above, including English, maths and a creative subject, plus a portfolio of your creative work.

Length:

Year 1: Diploma

Year 2: Extended Diploma

Whether you are interested in becoming a games designer, 3D modeller, web designer or filmmaker, one of our media courses at Brighton MET could be the first step towards an exciting career. You will discover a wide range of media technologies, with opportunities to realise your individual interests through these programmes.

KEY FEATURES

Top-of-the-range digital arts facilities

Practical project-based learning

Industry relevant trips and visits

Opportunities to gain valuable work experience with external clients

FUTURE CAREERS

Editor or content creator

Animator

Graphic designer

Social media executive

Photographer

Digital marketer

Journalist or researcher

Web designer

Filmmaker

TV or radio producer

WHAT'S NEXT?

After completing the Level 3 Extended Diploma, you could progress to university, one of our Level 4 courses, an apprenticeship, or employment.





Central
Brighton
Campus



FILM & BROADCAST

WHAT LEVEL CAN I JOIN?

Level 3

UAL Level 3 Diploma /
Extended Diploma in Creative
Media Production & Technology
(Filmmaking)

Entry requirements:

At least four GCSEs at grade 4 or above, including English, maths and a creative subject. You will need to show an interest in filmmaking.

Length:

Year 1: Diploma

Year 2: Extended Diploma

NEW

T-LEVELS

Level 3

Media, Broadcast & Production

Entry requirements:

Five GCSEs at grade 4 or above, including English and maths.

Length: 2 years

Brighton's thriving film and digital scene provides the perfect backdrop from which to develop skills and knowledge aligned to industry practices. You will learn through practical projects using professional cameras and editing facilities, backed up with theory and critical analysis; all of which are essential to entering the TV, video and film industries.

KEY FEATURES

State-of-the-art cameras and editing software

Opportunities to work on live broadcasts of gigs, talks and performances across the city

Guest speakers provide industry insights

Industry-based projects and work experience opportunities

WHAT'S NEXT?

On successful completion of the Extended Diploma you could progress to a university-level course, start an apprenticeship, or seek employment.

FUTURE CAREERS

Editor

Screenwriter

Camera operator

Freelance videographer

Cinematographer

Filmmaker / broadcaster

Animator

Social media content creator



ual: awarding
body



PHOTOGRAPHY

Our exciting photography course will help you develop your creative and technical skills including the use of specialist equipment, studio lighting, lenses, camera controls and set-ups. You will be able to extend your digital and traditional photography skills, including darkroom practices and techniques, and the use of software such as Photoshop and Lightroom to help you create a professional portfolio.

We regularly have projects and live briefs linked to practising photographers and photographic businesses in Brighton.

KEY FEATURES

Extensive photographic facilities

Taught by industry practitioners

Commissions from external clients

Visits from industry professionals

Live briefs and commissions



WHAT LEVEL CAN I JOIN?

Level 3

UAL Level 3 Diploma / Extended Diploma in Creative Practice: Art, Design & Communication (Photography & Lens-Based Media)

Entry requirements:
At least four GCSEs at grade 4 or above, including English, maths and a creative subject, and a portfolio of your creative work.

Length:
Year 1: Diploma
Year 2: Extended Diploma

FUTURE CAREERS

Media / magazine features editor

Events / wedding photographer

Interiors / food stylist photographer

Fashion photographer

Fine art photographer

Sports journalism

WHAT'S NEXT?

On successful completion of the Extended Diploma you could progress to a BA in Photography, specialising in a particular genre or on to one of our Level 4 courses. We offer BA (Hons) Photography at Northbrook College (see page 98).





FASHION DESIGN & BUSINESS

This course is for aspiring fashion designers who want to develop their skills in designing, making and understanding the fast-paced and exciting world of fashion. Our fashion design and business course has been created to equip you with the skills and knowledge to develop your career in the fashion industry.

Our students progress directly into the industry or on to fashion degrees at some of the UK's most prestigious universities.

KEY FEATURES

Opportunities to gain valuable work experience through live projects

Taught by fashion industry specialists

Excellent progression to prestigious universities

Create an outstanding professional portfolio



WHAT'S NEXT?

Most of our Level 3 students go on to higher education including renowned universities such as the London College of Fashion, Central Saint Martins and Chelsea College of Art, to study a specialised aspect of the fashion industry. Others go in to internships, direct employment in the fashion industry or fashion retail, self-employment as a maker / designer or on to our Level 4 Creative Enterprise course.

FUTURE CAREERS

Clothing design

Tailoring

Footwear

Fashion illustration

Accessories

Fashion styling

Childrenswear

Brand management

Body contour & lingerie

Fashion / retail buying

Bridal

Self-employed maker / designer

WHAT LEVEL CAN I JOIN?

Level 3

UAL Level 3 Diploma / Extended Diploma in Creative Practice: Art, Design & Communication (Fashion Design & Business)

Entry requirements:

At least four GCSEs at grade 4 or above, including English and maths, and a creative subject and your portfolio of creative work.

Length:

Year 1: Diploma

Year 2: Extended Diploma





VISUAL MERCHANDISING & STYLING

Do you have a passion for trends, styling and fashion? Would you like to work in the fast-paced retail, social media or styling industry? If so, this course could be for you.

You will learn the fundamental principles, inspiration and techniques involved in visual merchandising for sales and retailing in-store and online.

KEY FEATURES

Opportunities to gain valuable work experience with external clients

Dedicated design, fashion and photography studios

Industry relevant trips

Live projects and collaborations

Taught by fashion industry specialists

WHAT LEVEL CAN I JOIN?

Level 2

Level 2 Visual Merchandising & Styling (UAL Level 2 Diploma in Art & Design)

Entry requirements:

At least three GCSEs at grade 3 or above, including a creative subject, English and maths.

Length: 1 year

Level 3

Level 3 Visual Merchandising & Styling (UAL Level 3 Diploma / Extended Diploma in Creative Practice: Art, Design & Communication)

Entry requirements: At least four GCSEs at grade 4 or above, including English, maths and a creative subject.

Length:

Year 1: Diploma

Year 2: Extended Diploma



WHAT'S NEXT?

Many of our creative industries students continue their studies to degree-level, attending top universities including London College of Fashion, University of Westminster, Central Saint Martins and Nottingham Trent University.

FUTURE CAREERS

Visual merchandiser

Fashion stylist

Content creator

Social media influencer

Merchandiser

Fashion coordinator

Fashion marketing

Events stylist

Social media stylist





GAMES, ANIMATION & VISUAL EFFECTS

Our games design course is the perfect start to launch a career in the games industry or to enable you to progress to further study at university. The course will provide you with the practical skills, techniques and knowledge to help your future career in this fast growing industry.

You will learn all aspects of game and concept design within a creative and supportive environment. Throughout the course there will also be opportunities to work with industry specialists on live briefs. Games industry work experience is a key feature of the course, enabling you to develop relevant vocational skills and experience.

WHAT LEVEL CAN I JOIN?

Level 2

UAL Level 2 Diploma in Creative Media Production & Technology (Games Design, Animation & e-Sports)

Entry requirements:

At least four GCSEs at grade 3 or above, including a creative subject, English and maths, and a portfolio of your creative work.

Length: 1 year

Level 3

UAL Level 3 Diploma / Extended Diploma in Creative Media Production & Technology (Games, Animation & VFX)

Entry requirements:

At least four GCSEs at grade 4 or above, including English, maths and a creative subject, plus a portfolio of your creative work. If you are unable to meet the entry requirements, you can start with Level 2 Creative Media (page 52) or Art & Design courses (page 50).

Length:

Year 1: Diploma

Year 2: Extended Diploma

FUTURE CAREERS

2D / 3D animator

Game artist

3D modeller

Games / level designer

Art director

ual: awarding body

KEY FEATURES

Industry-standard facilities and software

Work on live briefs

Research trips (such as Comic Con and Tate Modern)

Opportunities to meet and work with industry professionals

WHAT'S NEXT?

On successful completion of the Extended Diploma, you could progress to one of our creative Level 4 qualifications, go on to university to specialise in an aspect of games design, start an apprenticeship, or go in to employment.





DIGITAL MARKETING

This Level 3 Digital Marketing course provides the skills, qualification and experience you need to become an effective digital marketer – and immerse yourself within an exciting, fast-moving industry.

You'll get hands-on experience in all areas of digital marketing, from content creation to social media, SEO, and advanced analysis.

You will get an introduction to exciting creative projects like podcasting, web design, blogging and video editing.

With our expert teaching and one-to-one support, you'll channel your creativity and learn to create, implement, and analyse successful campaigns.

WHAT LEVEL CAN I JOIN?

Level 3

UAL Level 3 Diploma / Extended Diploma in Creative Media Production & Technology (Digital Marketing)

Entry requirements:

At least five GCSEs grade 4 or above, including English, maths and a creative subject.

Length:

Year 1: Diploma

Year 2: Extended Diploma



FUTURE CAREERS

Marketing executive

Digital or content marketer

Social media manager

SEO specialist

Market researcher

Advertising copywriter

KEY FEATURES

Social media campaigns and advertising

Risk, reputation and crisis response

Project management

Search Engine Optimisation

WHAT'S NEXT?

After completion of the two-year programme, you can progress on to a degree-level course, become self-employed as a digital marketer or work within the marketing industry.



ual: awarding body



ART & DESIGN FOUNDATION

The Foundation Diploma is an exciting and fast-paced course which will enable you to build on your prior knowledge and skills, and to explore your creativity at a deeper level. We will develop your creative independence and encourage experimentation in a dynamic and safe creative environment. Throughout the course you will experience a wide range of processes and contemporary approaches to creativity which will allow you to define your individual creative practice. For example, you can explore 3D design, fashion and textiles, fine art, illustration and graphic design.

KEY FEATURES

Specialist art studios and workshops

Opportunities to gain valuable work experience with external clients

Residential and industry relevant trips

Outstanding progression rates and association with prestigious arts universities

WHAT LEVEL CAN I JOIN?

Level 3

UAL Level 3 Diploma in Art & Design – Foundation Studies

Entry requirements:

At least one A-Level at grade C or higher (or equivalent Level 3 qualification) in a creative subject. Plus five GCSEs grades 9–4 to include English and maths, and a portfolio of your creative work.

Length: 1 year



WHAT'S NEXT?

On successful completion of the Foundation Diploma, our students progress on to higher education. Many go on to some of the world's most prestigious universities including; Central Saint Martins, Slade, London College of Fashion, Goldsmiths and Chelsea.

FUTURE CAREERS

3D designer / maker

Digital artist

Graphic designer and visual
communications specialist

Fashion designer

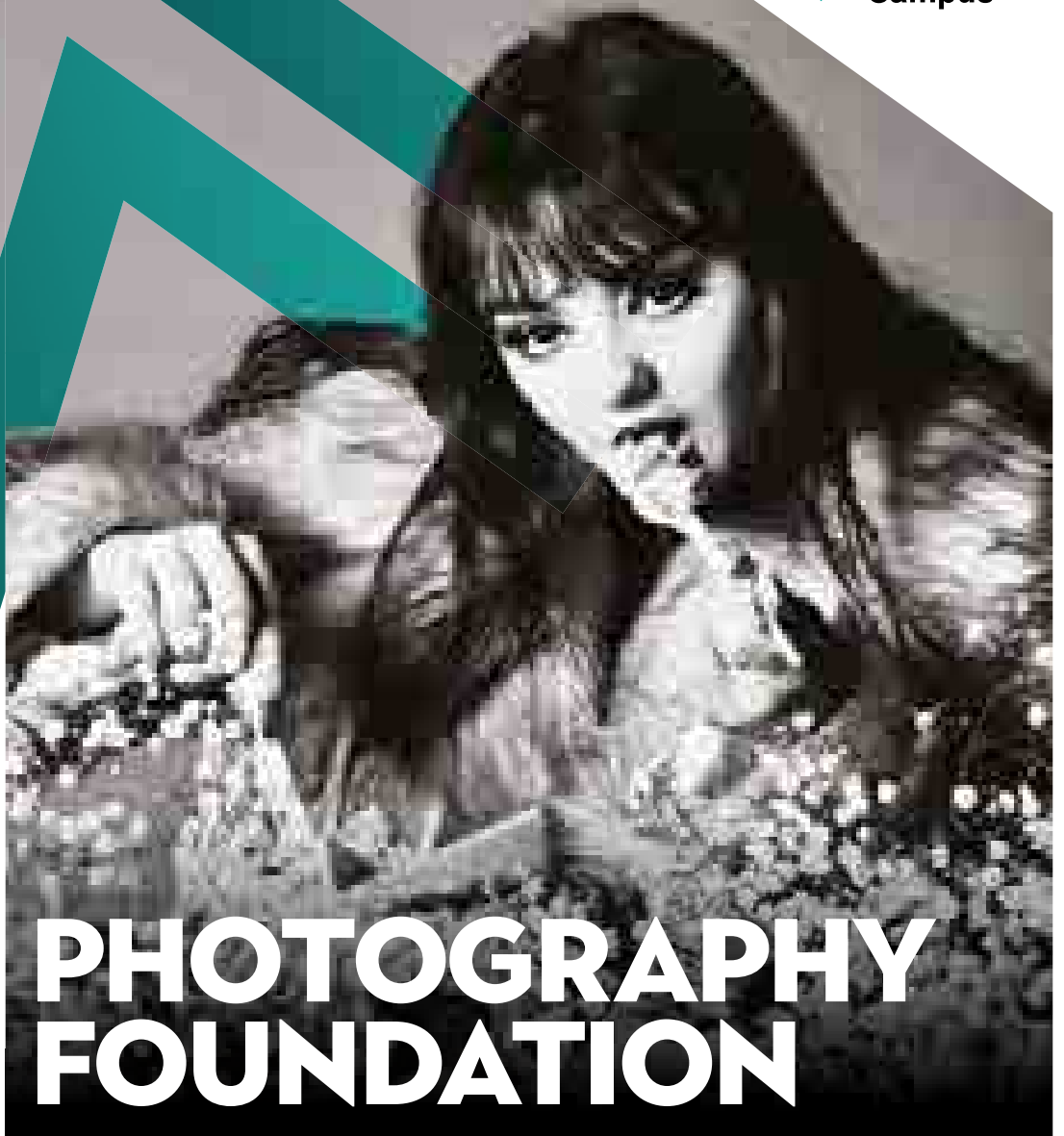
Illustrator

Gallery curator

Freelance artist

Photographer





PHOTOGRAPHY FOUNDATION

An exciting year of photographic study that encourages inventiveness and exploration, enabling you to produce a sophisticated portfolio to progress to university or employment.

Based in the vibrant creative industries department, the emphasis is on becoming a confident, professional photographer seeking creative solutions.

Industry-based projects and work experience are a key feature of this photography course, enabling you to develop the vocational skills and confidence to successfully progress within the creative industries.

WHAT LEVEL CAN I JOIN?

Level 3

UAL Level 3 Diploma in Art & Design – Foundation Studies

Entry requirements:

At least one A-Level at grade C or above (or equivalent Level 3 qualification) in a creative subject. Plus five GCSEs grades 9–4 to include English and maths, and a portfolio of your creative work.

Length: 1 year

KEY FEATURES

Extensive photographic facilities

Visits from industry professionals

Outstanding progression to universities and employment

Live briefs and commissions from external clients

WHAT'S NEXT?

On successful completion, you could progress to a BA in photography specialising in a particular genre or on to one of our Level 4 courses. We offer a BA (Hons) Photography at Northbrook College (see page 98).

FUTURE CAREERS

Media / magazine
features editor

Events / wedding
photographer

Interiors photographer

Food stylist photographer

Fashion photographer

Fine art photographer

Sports / journalism





CREATIVE ENTERPRISE

Our UAL Level 4 Professional Diploma in Creative Enterprise has been designed to provide you with the skills, knowledge and understanding necessary to develop your career as a freelance or self-employed creative professional. It will inspire and help you to define your artistic ambitions.

Throughout the course you will be able to develop your creative enterprise skills, expanding your contact base whilst continuing or forming your own creative start-up projects and arts professional practice.

KEY FEATURES

A unique one-year programme to enable you to succeed in your creative start-up

Learn specialist entrepreneurial skills such as making a pitch and writing a business plan

Work with industry specialists on live briefs

WHAT LEVEL CAN I JOIN?

Level 4

UAL Level 4 Professional Diploma in Creative Enterprise

Entry requirements:

There are no age restrictions for this qualification although students will be expected to be 18+ when they start, having completed A-Levels, a Level 3 Extended Diploma or a relevant apprenticeship.

Length: 1 Year

FUTURE CAREERS

Clothing design

Self-employed maker /designer

Self-employed artist

Freelance photographer

Freelance filmmaker

Craftsperson

WHAT'S NEXT?

On successful completion of this course you could progress on to higher education (see page 98 for courses at Northbrook College), in to employment or self-employment.

ual: awarding body



HAIR & BEAUTY



**A future
that's always
in style**

Our experienced tutors in our hair & beauty department will teach you all the skills and techniques you need to succeed in the industry. By working alongside other students who are passionate about hair and beauty, we are sure you will be inspired. You will have plenty of opportunities to put your training into practice, working at our on-site training salons which offer discounted treatments to the public.

HAIR SHOW 2023

This year's Hair and Media Makeup & Fashion show saw students showcase their creative styling talents by creating looks inspired by the themes of 'Myths and Legends' and 'Order/Disorder'.

CAREERS SPOTLIGHT

Hairdresser

£14,000 - £25,000

Hairdressers cut, style and colour clients' hair to create the look they want.

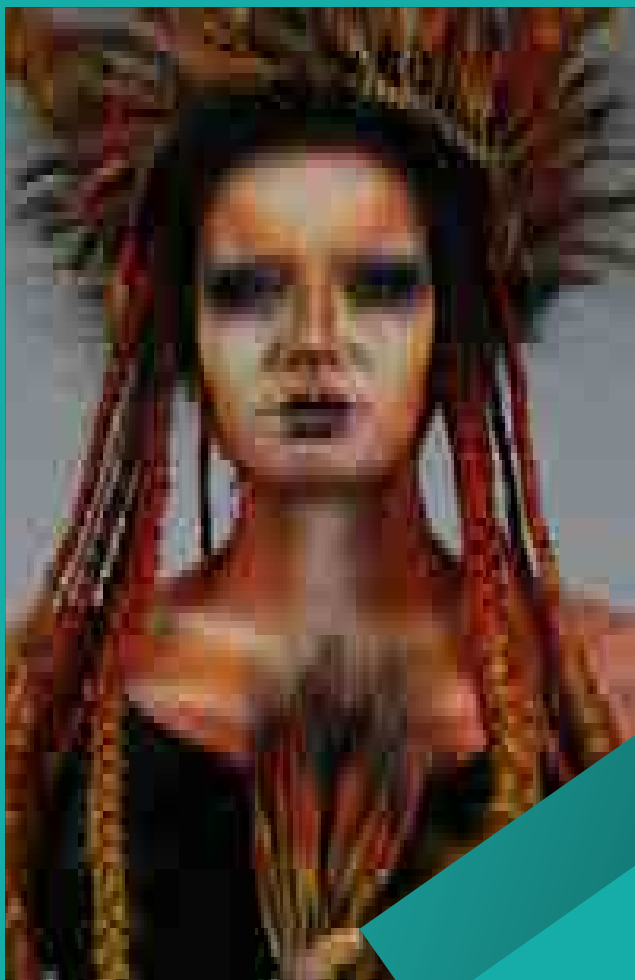
Beauty consultant:

£14,000 - £25,000

Helps customers to choose beauty products, offers advice and provides makeovers.

National Careers Service, 2023

Visit our new website:
brightonmet.ac.uk



FACILITIES

Brighton MET operates a professional hair & beauty salon on campus that is open to the public. To provide you with a fantastic start to your chosen career, you will work with real clients in the salon, building up your familiarity with this environment, along with your confidence.

FUTURE CAREERS

Hairdresser / stylist

Colourist

Salon owner

Barber

Fashion hairstyling

Media hairstyling

Theatrical makeup

Beauty therapist



HAIRDRESSING & BARBERING



The hair & beauty industry is a global, multi-billion pound industry, with endless career opportunities.

This course will give you an introduction into the Hairdressing and Barbering industries.

This course supports you in developing the knowledge, skills and confidence needed to move on to higher level studies in Hairdressing or Barbering.

KEY FEATURES

Develop transferable service industry skills

Brand new salon facilities

Practical experience in a realistic commercial environment

Progression opportunities on to a higher level service industry course

WHAT LEVEL CAN I JOIN?

Level 1 Certificate

VTCT Level 1 NVQ Certificate in Hairdressing and Barbering

Entry requirements:

A minimum of two GCSEs at grade 2 or above including English and maths.

Length: 1 year

WHAT'S NEXT?

On successful completion, you can progress on to a Level 2 qualification in hairdressing or barbering. Alternatively, you could study for a hairdressing apprenticeship in a salon.

FUTURE CAREERS

Hairdresser

Barber

Salon stylist or colourist



HAIRDRESSING

Studying hairdressing at Brighton MET is hands-on, exciting and will leave you with the skills, confidence and experience to progress to employment or further study.

Training in our professional salons, you will develop your skills in customer service, communication and commerciality, preparing you for work in salons, hotels, cruise liners and department stores in the UK or overseas.

WHAT LEVEL CAN I JOIN?

Level 2

VTCT Level 2 Diploma in Hairdressing Studies

Entry requirements:
School leavers will start at Level 2 if you have the following: a minimum of three GCSEs at Grade 3 or above, including English, maths and science or P.E.

Length: 1 year

Level 3

VTCT Level 3 Diploma in Women's Hairdressing

Entry requirements:
Level 2 Diploma in Hairdressing (or equivalent).

A minimum of three GCSEs at grade 3 or above, including English, maths and science or P.E are desirable.

Length: 1 year

T-LEVELS **NEW**

Level 3

Hairdressing

Entry requirements:
Five GCSEs at Grade 4 or above including maths, English and science or P.E.

Length: 2 years

KEY FEATURES

Develop transferable service industry skills

Practical experience in a realistic commercial environment

Brand new salon facilities

Progression opportunities on to a higher level service industry course or in to employment

FUTURE CAREERS

Salon stylist or colourist

Work overseas in a hotel or on board a cruise liner

Fashion / editorial stylist

Freelance hairdresser

Salon owner

WHAT'S NEXT?

After Level 3, you could complete other specialist qualifications or part-time courses, such as makeup artistry, theatrical makeup or hair extensions.





BARBERING

This course is for those who wish to pursue a career as an employed or self-employed barber. You will be introduced to a wide range of practical barbering techniques and have the opportunity to develop your skills in customer service, communications and commerciality; all of which are highly valued by employers.

KEY FEATURES

Develop transferable service industry skills

Build your confidence and practical experience in a realistic commercial environment

Brand new salon facilities

Progression opportunities on to a higher level service industry course

FUTURE CAREERS

Barber

Media hair stylist

Fashion hair stylist

Salon owner

WHAT LEVEL CAN I JOIN?

Level 2

VTCT Level 1 NVQ Certificate in Hairdressing and Barbering

Entry requirements:

Start at Level 2 if you have a minimum of 3 GCSEs at grade 3 or above, including English, maths, science or P.E.

Length: 1 year

WHAT'S NEXT?

After Level 2, you could complete other specialist qualifications such as hair & media makeup, or part-time courses. Alternatively you could undertake a barbering apprenticeship or seek employment.





Central
Brighton
Campus



BEAUTY THERAPY & MAKEUP

This Level 1 course will give you an introduction to the beauty and makeup industries.

This course supports you in developing the knowledge, skills and confidence needed to move on to higher-level studies in Beauty or Makeup.

WHAT LEVEL CAN I JOIN?

Level 1

VTCT Level 1 Diploma in
Beauty Therapy

Entry requirements:

A minimum of two GCSEs at grade 2 or above including English and maths.

Length: 1 year



KEY FEATURES

Develop transferable service industry skills

Brand new salon facilities

Practical experience in a realistic commercial environment

Progression opportunities on to a higher level service industry course

WHAT'S NEXT?

After Level 1, you could complete other specialist qualifications or part-time courses, such as makeup artistry, theatrical makeup or hair extensions.

FUTURE CAREERS

Makeup artist

Beauty blogger

Beauty therapist

Customer service

Retail





HAIR & MEDIA MAKEUP

This course is ideal if you are interested in a career as a makeup artist, providing hair and makeup services in media, theatre, performing arts, fashion and photographic industries. You will learn a variety of creative techniques, as well as communication and commercial skills, which are highly valued by employers.

KEY FEATURES

Professional salon open to the public

Lecturers have current industry experience

High-end industry branded equipment / products

Strong industry and employer links

Excellent training facilities



WHAT LEVEL CAN I JOIN?

Level 2

VTCT Level 2 Diploma in Hair & Media Makeup

Entry requirements:

A minimum of three GCSEs at grade 3 or above, including English maths and an art subject (or a portfolio of your creative work).

Length: 1 year

Level 3

VTCT Level 3 Diploma in Theatrical, Special Effects, Hair & Media Makeup

Entry requirements:

You must have successfully completed the Level 2 Diploma in Hair & Media Makeup.

Length: 1 year

FUTURE CAREERS

Professional makeup artistry settings working with performers

Theatre, film, print media and photographic studios

Beauty and hair salons

Self-employed mobile / home settings

National Health Service

STUDENT SPOTLIGHT

Level 3 student, Isabelle, was highly commended in an international competition set by Warpaint Magazine, an online publication for makeup artists around the world.

WHAT'S NEXT?

After Level 3, you could choose to develop your knowledge and skills further by completing a specialist qualification, or a Level 2 or 3 in hairdressing, barbering or beauty therapy. You can also progress to the Make up and Hair for Theatre and Media BA (Hons) Degree at Northbrook College (see page 98).





Central
Brighton
Campus

BEAUTY THERAPY

Our beauty therapy courses are taught in our state-of-the-art salons and brand new clinic. You will learn to provide a wide range of treatments, as well as developing your skills in customer service, communication and commercial awareness.

KEY FEATURES

Learn in a brand new professional salon open to the public

Lecturers have current industry experience

High-end industry branded equipment / products

Strong industry and employer links

Excellent training facilities

STUDENT SPOTLIGHT

“The new facilities create an aspirational and realistic environment which will prepare me for the best jobs, and thanks to the College I know what a professional work environment should look like.”

Sarah, Level 3 Beauty Therapy



WHAT'S NEXT?

After completing Level 4 Beauty Therapy you may wish to develop your skills further. This might include courses in Level 5 Tattoo Removal or Level 4 Microblading/ Micropigmentation. You can also progress into employment or self-employment.

FUTURE CAREERS

- | | |
|--------------------------|------------------------|
| <u>Dermatologist</u> | <u>Nail technician</u> |
| <u>Beauty therapist</u> | <u>Esthetician</u> |
| <u>Beauty consultant</u> | |

WHAT LEVEL CAN I JOIN?

Level 2

VTCT Level 2 Diploma In Beauty Therapy

Entry requirements:
School leavers will start at Level 2 if you have the following: at least three GCSEs at Grade 3 or above, including English, maths and science or P.E.

Length: 1 year

Level 3

VTCT Level 3 Diploma in Beauty Therapy Studies

Entry requirements:
You must have successfully completed the Level 2 Diploma in Beauty Therapy.

Length: 1 year

Level 4

VTCT Level 4 Diploma in Advanced Beauty Therapy

Entry requirements:
You must have a Level 3 Beauty Therapy qualification

Length: 1 year

T-LEVELS NEW

Level 3

Beauty Therapy

Entry requirements:
Five GCSEs at Grade 4 or above including English, maths and science or P.E.

Length: 2 years

SPORT



Get your head in the game

If you love sport and want to develop your skills and knowledge further, or you are a talented athlete and want to enhance your own ability, why not take advantage of the courses and qualifications on offer at Brighton MET.

Studying sports will help prepare you for a career in the sports industry. You will receive specific coaching or fitness career development and guidance, with well-informed university-level progression support.

WE HAVE A NATIONALLY RENOWNED BOXING ACADEMY

See page 90 for more information.

CAREERS SPOTLIGHT

Sports coach:
£18,000 – £28,000

Teaches sports skills to individuals and teams of all abilities.

Performance sports scientist:
£20,000 – £60,000

Uses knowledge of how the body works to help people improve their health or sporting ability.

National Careers Service, 2023



TEAMS

We have a number of Brighton MET sports teams that compete locally and nationally in league and cup competitions against other colleges.

FACILITIES

Our East Brighton Campus has fantastic facilities for students and is a major provider of sports courses in the south east. This includes:

A state-of-the-art boxing gym

AstroTurf and 3G pitches

Fully equipped gym with all the latest cardiovascular and weight machines

Access to the South Downs and Brighton Swimming Centre

Enrichment activities such as yoga, circuit training and table tennis

“The **teaching** at the MET was **fundamental to my success** at the college. The individual personalities, **dedication** and personal care of the tutors helped me to secure a place at a top university, studying for my **dream job**.”

Archie studied Level 3 Sport at Brighton MET and is now studying BSc (Hons) Sport Rehabilitation at the University of Nottingham.

Visit our new website:
brightonmet.ac.uk



SPORT

If you're passionate about sport, studying at Brighton MET is a great way to learn how to earn money from the subject you love. We offer sport programmes up to Level 3, helping you to build your employability, personal skills and subject knowledge in preparation for your future career.

FUTURE CAREERS

Sports / fitness coach / management

PE / sports teacher

Fitness instructor / personal trainer

Health and wellbeing / lifestyle coach

Nutritionist



WHAT LEVEL CAN I JOIN?

Level 1

NCFE Level 1 Certificate in Sport

Entry requirements:

At least two GCSEs at grade 2 or above, preferably including English and maths.

Length: 1 year

Level 2

NCFE Level 2 Certificate in Sport (Sports Coaching)

Entry requirements:

At least three GCSEs at grade 3 or above, including English and maths.

Length: 1 year

Level 3

NCFE Level 3 Diploma / Extended Diploma in Sport

Entry requirements:

At least four GCSEs at grade 4 or above, including English and maths.

Length:

Year 1: Certificate/Diploma

Year 2: Diploma/ Extended Diploma

While studying Level 3 Sport, you will be offered the opportunity to undertake additional qualifications alongside. These include: Personal Training, Fitness Instruction and Sports Leadership. These courses will enhance your CV, skills and knowledge within this sector.

KEY FEATURES

Practical sessions and work experience placements

Participation in a wide range of sports and physical activities

Excellent on-site sports facilities

Option to join the Boxing Academy

Study additional qualifications as part of the course

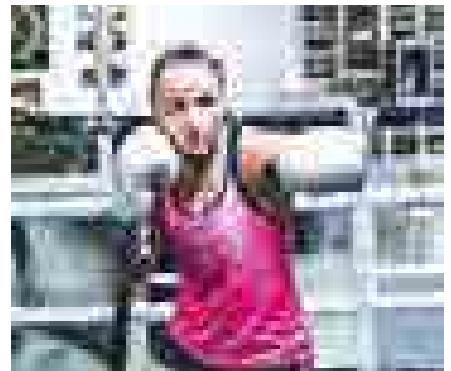
WHAT'S NEXT?

After Level 3, you could continue your studies with an apprenticeship or apply to university. Alternatively, you could move into full-time employment.



BOXING ACADEMY

Our nationally renowned Boxing Academy has worked closely with clubs from all over the south to produce amateur boxers who have won regional, national and international titles boxing for England and Great Britain. Join the Academy to receive bespoke coaching from our international coach. You will also benefit from nutrition advice, strength and conditioning programmes and video performance analysis, learning alongside aspiring elite boxers.



AS PART OF THE STUDY PROGRAMME YOU CAN GAIN:

Level 3 Diploma in Excellence in Sporting Performance

Level 2 or Level 3 Diploma in Sport

England Boxing recognised coaching qualification

Talent ID for the England Talent Pathway by our England Coach

Level 1 qualifications in sport coaching (additional to boxing coaching badge)

First aid qualification

Boxing qualification with 64 UCAS points

Potential to attend our annual two-week boxing training camp in Tenerife

ENTRY REQUIREMENTS:

You must be on a full-time Level 2 or 3 NCFE or BTEC vocational course at Brighton MET.

There are no formal entry requirements, although there will be academic requirements specific to the curriculum course. Boxers must be associated to an 'England Boxing' affiliated club. Affiliation to any club outside of England Boxing's governance is prohibited.

WHAT'S NEXT?

Adam says: "DiSE acts as accelerated improvement and scouting agent for the England Talent Pathway. We have progressed countless boxers on to the pathway since the course began in November 2010, including ex-GB world-class programme and now pro boxer, Raven Chapman-Edwards."



MEET THE TUTOR

Adam Haniver | DiSE Boxing Coach & Assessor

Level 3 EB Coach

International AIBA 2 Star Coach

England National Talent Pathway Coach

BSc (Hons) PGCE Sport & Exercise Science

England Boxing Coach Educator

The Box Gathering Co-President

"My goal for our DiSE boxing students is for them to become **independent, accountable and intelligent competitors**. If every boxing coach in the world suddenly disappeared in a cloud of smoke, I feel our boxers would be more **equipped** than most to look after their own **progress as they will have an in-depth understanding around their own development.**"

BOXING CORE VALUES

FEEDBACK | ACCOUNTABILITY | RESPECT

Our values-based approach encourages our students not only to excel as boxers, but as people. Our expectations are that each and every student leaves the Academy in a better place than they started and to leave a legacy for future students.

T LEVELS



*WELCOME TO
THE NEXT LEVEL*

**WELCOME TO
THE NEXT LEVEL**

T Levels are technical qualifications designed to help you get ahead in your dream career.

Equivalent to three A-levels, they combine the career focus and practical elements of technical qualifications with classroom-based learning and industry placements – a key element of all T Level courses.

They'll provide you with a clear route into skilled employment, university or degree-level employment.

T-LEVELS

THE NEXT LEVEL QUALIFICATION

WHY SHOULD I CHOOSE A T LEVEL?

- ↑ You'll develop the practical skills needed for your chosen career
- ↑ You'll experience what the job involves
- ↑ You'll gain knowledge of your chosen sector
- ↑ You'll achieve a technical level 3 qualification, equivalent to three A-levels
- ↑ You can build a relationship with potential employers
- ↑ You'll have the option to progress into higher level study

HOW ARE T LEVELS TAUGHT?

During your two-year course, you'll spend 80% of your time in the classroom and 20% of your time on industry placement

HOW WILL I BE ASSESSED?

You'll be assessed through exams, coursework, workplace observations, an employer-set project and an end-point assessment.

WHAT ARE THE ENTRY REQUIREMENTS?

You'll need at least five GCSEs at grade 4 or above, including English and maths. For some T Levels, you may also need to achieve a minimum of grade 4 in relevant subjects.

For more information about T Levels at Brighton MET: brightonmet.ac.uk



WHAT IS AN INDUSTRY PLACEMENT?

Your industry placement will give you vital work experience and it's an essential part of the T Level qualification.

You'll complete between 45-60 days in an industry placement over the duration of your two-year course.

This means you'll gain an in-depth experience which will help you to develop the crucial workplace skills that employers are looking for. You'll also discover what the job you want to do really involves.

It's also an opportunity to develop a relationship with your industry placement employer, giving you the potential to get a foot in the door to your future career!

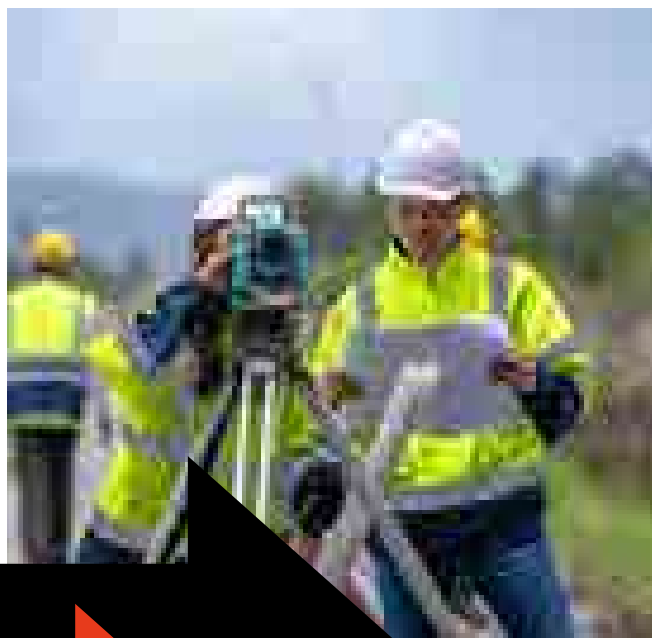
WHAT ABOUT T LEVEL FOUNDATION QUALIFICATIONS?

WHAT ARE THEY?

We know not everyone who wants to study a T Level is quite ready – and that's where the T Level Foundation courses come in.

If you haven't been able to meet the entry requirements for the full, level 3 T Level, these courses will help you to get there, allowing time for you to study English and/or maths while getting an introduction to T Levels.

You'll also have an opportunity to participate in work experience and gain introductory technical skills.



OUR T LEVEL COURSES

From September 2024, we'll be offering the T levels in:

Construction

Design, Surveying & Planning

Digital

Production, Design & Development

Digital Support Services

Education & Early Years

Early Years Educator

Health & Science

Supporting Adult Nursing

Hair & Beauty

Beauty Therapy

Hairdressing

Creative & Design

Media, Broadcast & Production

Our T Level courses are correct at time of printing (August 2023) and are subject to change



93% PASS RATE

in 2023 for T Levels across
Chichester College Group*

“This T Level has given me many opportunities to grow, not only in my knowledge of childcare but also as a person. The skills I’ve learnt will transfer to support me for life.”

Sophie, studied Education & Childcare T Level
(2020-22)

Find out more

If you have any questions about T Levels, get
in touch. Email us at t-levels@chigroup.ac.uk

APPRENTICESHIPS



Speak to us

To apply for an apprenticeship or to find out more information please contact our apprenticeship team:



01903 273732



apprenticeships@chigroup.ac.uk

You can also visit our website for more information:
www.brightonmet.ac.uk/apprenticeships





An apprenticeship is a great way to earn money, gain real work experience and achieve a nationally recognised qualification in your chosen industry.

We're one of the largest providers of apprenticeships in the region, and our consistently high achievement rates give you the assurance that you'll receive high quality training and support with us.

WE OFFER APPRENTICESHIPS ACROSS A RANGE OF JOB ROLES AND LEVELS, INCLUDING:

Accounting

Professional Accounting Taxation Technician

Construction

Site Carpentry & Architectural Joinery

Early Years

Early Years

Human Resources

HR Support

HR Consultant/Business Partner

KEY FACTS ABOUT APPRENTICESHIPS

- > **It's a real job**
You'll be treated just like a regular employee of the company with a contract of employment, salary and employee benefits such as holiday and sick leave.
- > **There's no age limit**
Anyone over the age of 16 is eligible to become an apprentice, whether you're employed, unemployed or leaving school.
- > **You can choose from a wide range of apprenticeships**
There are more than 80 different apprenticeships for you to choose from, across a range of levels, so you can be sure you're heading towards the right career path for you.



Discover more apprenticeships at our other colleges, visit www.chigroup.ac.uk/apprenticeships



EDUCATION HIGHER

CHOOSE ONE OF OUR UNIVERSITY-LEVEL COURSES

You can continue your study journey with one of our degree level courses, offered at a number of Chichester College Group colleges.

There are a range of higher education options available to you, and our courses are developed in consultation with industry experts and delivered in our industry-standard facilities.

Across the group*, we offer courses in a variety of subjects, including:

- > Animal Management & Care
- > Arts (Fine Art, Textiles & Fashion)
- > Business & Management
- > Computing & Digital Technology
- > Construction
- > Creative Media
- > Digital Media (Graphics, Illustration & Photography)
- > Engineering & Technology
- > Healthcare Practice
- > Motorsport
- > Music (Performance and Production)
- > Technical Theatre
- > Theatre Performance & Dance
- > Sport

* Please note, not all courses are offered at all of our campuses. Visit our website for more information.

** QS World University Rankings 2023

*** Correct at time of printing for students completing a Level 3 qualification in June 2023. Progression Promise Guarantee may change for future students.

Visit our new website:
brightonmet.ac.uk



SMALL TEACHING GROUPS AND INDIVIDUAL SUPPORT

Many of our higher education courses are taught in small groups, and benefit from the support of teachers and student services.

COURSES VALIDATED BY LEADING UNIVERSITIES

Creative degrees at Northbrook College are validated by the prestigious University of the Arts London (UAL) – ranked second in the world for art and design**.

Other degree level, foundation and top-up degrees are validated or awarded by the University of Brighton, University of Chichester or the University of Portsmouth.

These universities oversee the standards of teaching, ensuring a high quality learning experience.

PROGRESSION PROMISE GUARANTEE***

We're here to support our students – and we make a promise to students studying a Level 3 course at any Chichester College Group college who wishes to progress on to one of our HE courses.

You'll receive a guaranteed interview for a university level courses and you could qualify for a one-off bursary to use towards your study costs. If we are your only choice of institution, you can apply directly to us with no application fee*

ACCESS TO

HIGHER EDUCATION

Fast track to Higher Education:
Prepare, Focus, Progress



Our Access to Higher Education (HE) courses are designed to inspire passion in your subject, build your confidence and put you at ease with achieving university-level standards.

Access to HE courses are accepted by UK universities and are an ideal route to university for 19+ students who do not have A-levels or Level 3 qualifications in relevant subjects.

OUR ACCESS COURSES

Across Chichester College Group, we offer Access courses in:

- > Applied Science B
- > Computing B C
- > Engineering C
- > Environmental Science C
- > Healthcare Professions C
- > Humanities (English, History & Philosophy)* C C
- > Humanities & Social Science B C W
- > Medical Science C
- > Nursing & Healthcare Professions B W
- > Psychology and Counselling B
- > Science C
- > Sport Science C
- > Pre-Access Award in Skills for Professions in Health & Social Care B

DISCOVER MORE

Visit our new website:
brightonmet.ac.uk

*These courses are now delivered through a combination of remote, evening classes with face-to-face teaching on one Saturday every half-term.

B Brighton MET C Chichester
C Crawley W Worthing

MATHS & ENGLISH

We'll support you to retake your exams if needed

Maths and English skills are important to employers, and may be a key requirement if you want to progress onto other courses after college – or even for the course you want to do at college.

If you don't achieve (or haven't already achieved) a grade 4 or above in GCSE maths and/or English, we'll support you to retake your exams with study sessions and tutoring built into your study programme.

Some courses, such as A-levels or T Levels, may require you to have achieved grade 4 or above in maths and/or English before you start your course – but don't worry. Speak to our advisors and we'll find the right path to support you.

MATHS AND ENGLISH FOR 19+ STUDENTS

We offer maths and English GCSE courses, designed for adult students who are looking to continue their education, retrain or develop within their career.

And if you haven't already achieved a grade 4 (or grade C), there are no tuition fees for these courses.

To find out more, contact:
adultenglishandmaths@gbmc.ac.uk



ESOL

We offer ESOL (English for Speakers of Other Languages) courses throughout the year. We run these at different levels.

Prior to starting your courses, you will have an assessment to check your level of English and to determine which level of study is most appropriate.

Our ESOL classes will improve your English speaking, listening, reading and writing skills. To find out more, contact:
esol@gbmc.ac.uk



Central
and East
Brighton
Campuses

A photograph of two men laughing together. The man on the left is wearing a blue shirt and a dark vest, and the man on the right is wearing a blue shirt and an orange sweater. They are both looking down and smiling broadly. The image is partially obscured by a large teal arrow graphic pointing from the top left towards the center.

INCLUSION

WHAT LEVEL CAN I JOIN?

Gateway 1

RARPA Certificate in Independent Living – Entry Level 1 & 2

East Brighton Campus

Gateway 2

Laser Certificate in Employability and Progression – Entry Level 3

East Brighton Campus

Gateway 3

Laser Certificate in Learning for Employability and Progression – Level 1 / Level 1 Diploma in Year 2

East Brighton Campus

Gateway Catering

Laser Certificate in Learning for Employability and Progression – Level 1 / Level 1 Diploma in Year 2

Central Brighton Campus

We offer a range of courses to help those students who may need some additional support with their learning. Whether you have learning difficulties, an Education, Health & Care Plan (EHCP), or just need some help to develop your study skills and build your confidence, we have a course for you. Find out more about these courses on the next few pages.

FOUNDATION LEARNING GATEWAY

Full-time courses for students with mild / moderate learning difficulties: Laser Entry Level 2 to Laser Level 1

These Special Educational Needs and Disability (SEND) courses cater for 16–25 year-olds with mild / moderate learning difficulties, behavioural or social needs. These courses are also suitable for people with emotional health concerns.

Students gain skills and confidence through activities such as external day trips and community volunteering. You will also have opportunities to try vocational taster sessions in areas such as catering, construction and art, and gain independent living skills such as travel training and using money. Courses include literacy and numeracy, as well as job search and employability skills.

STAFF SPOTLIGHT

Ruby, Tutor

"I really enjoy teaching on our Gateway courses because we are able to support our learners with developing the skills they need to grow in independence and prepare them for courses in the wider college or the workplace. We work closely with the ALS team to ensure all of our young people receive the support they need to achieve."





SUPPORTED INTERNSHIPS

Support for young people with Education Health and Care Plans (EHCPs) to move from college in to work. Students are placed in work which matches their skills and aspirations; this role is unpaid with the aim of leading to possible employment.

Students also complete a personalised study programme including English, maths and an employment-focused qualification. Your time will be split between college (with a designated personal tutor) and your work placement.

A trained and experienced learning support assistant will support you with your college work. You will also have access to a job coach.



THE PRINCE'S TRUST ACHIEVE PROGRAMME

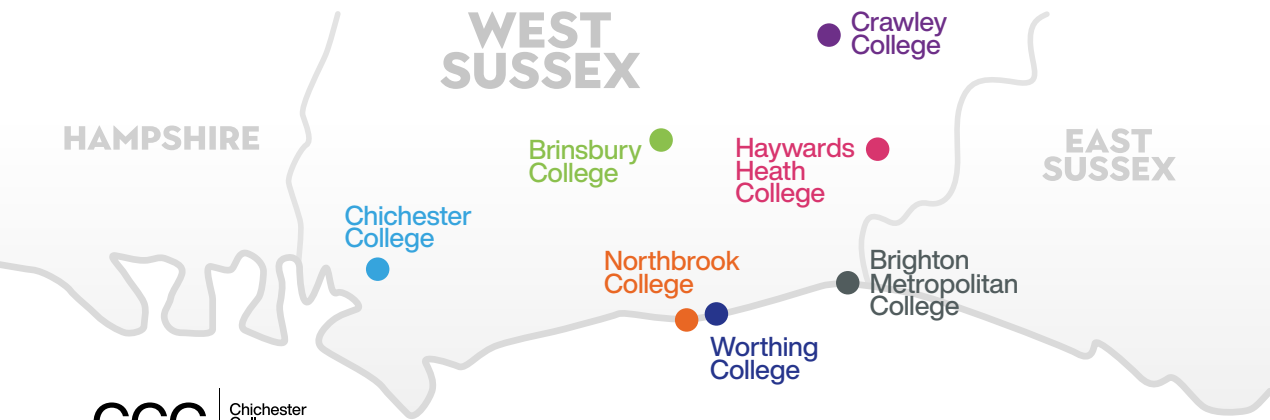
Not sure what you want to study at college? Need more time to reach your potential in English and maths? Then the Achieve programme is designed for you.

This is a year-long transition to a college course. You will take part in The Prince's Trust Achieve Programme, which includes a variety of vocational tasters, work experience and English and maths as needed. There is also a tutorial programme and pastoral support in smaller groups.

You will be attending college for three to four days a week, working with experienced staff on a range of exciting and engaging projects.

YOU'RE PART OF SOMETHING BIGGER

CHICHESTER COLLEGE GROUP



CCG | Chichester
College
Group

NOT FOUND WHAT YOU'RE LOOKING FOR?

Don't worry – we've got lots of alternative options at our other Chichester College Group colleges, where you'll be assured that you'll receive the same fantastic level of support and tuition as you'd experience here.

A diverse, vibrant college set across two specialist campuses – Central Brighton and East Brighton – you'll have a wide variety of vocational options available to you. With modern facilities, state-of-the-art workshops, new hair & beauty salons and a specialist Construction and Trades Centre – you'll find everything you need.



BRINSBURY COLLEGE



brinsbury.ac.uk

Be outstanding in your field and study subjects you won't find in a classroom. Our land-based college offers a range of unique courses including farming, animal care, equine, horticulture and blacksmithing – all in the stunning South Downs countryside with the facilities to match.

CHICHESTER COLLEGE



www.chichester.ac.uk

You'll be spoilt for choice at Chichester College, home to a wide-ranging variety of academic and vocational subjects, including A-levels and T Levels – all delivered in specialist, industry-standard facilities supported by a passionate community of lecturers and teaching staff.

CRAWLEY COLLEGE



crawley.ac.uk

You'll discover a range of practical, hands-on courses at Crawley College. It's at the very cutting-edge of training with new immersive spaces, launching October 2023, which use augmented reality, virtual reality and extended reality to simulate real-life environments to enhance and expand learning opportunities!

HAYWARDS HEATH COLLEGE



haywardsheath.ac.uk

You'll feel like you're part of a thriving community at Haywards Heath College. With an extensive selection of A-level courses to choose from, you'll enjoy learning in a modern college that has a big heart, with fresh purpose-built classrooms!



NORTHBROOK COLLEGE

northbrook.ac.uk

Your imagination is your only limitation at Northbrook College, where a wide range of courses await across our three campuses including creative university-level degree courses that are validated by the prestigious University of the Arts London. From state-of-the-art creative industries facilities at West Durrington, industry-standard training facilities at Broadwater to our specialist aircraft and motor vehicle campus at Shoreham Airport, you'll be in the fast lane to your future success!



WORTHING COLLEGE

worthing.ac.uk

A strong academic focus awaits at Worthing College, which is also known for its successful sporting community with a plethora of titles and links to top clubs including Harlequins Women's Rugby. The college offers a huge variety of A-levels, with a small selection of vocational options too.

KEY DATES

To help you navigate the next year, here's a handy timeline which outlines what you can expect

OCTOBER-NOVEMBER 2023

We hold open events during the autumn term, offering a great opportunity to explore your options, chat to our friendly staff and tour our facilities before submitting your application.

DECEMBER 2023 ONWARDS

After you've applied, we'll invite you in for an interview. This is just to chat through your application and provide guidance to ensure the courses you've applied for are right for you – nothing to worry about. Interviews will take place throughout the year.

MARCH 2024

We hold more open events in March, providing another opportunity to take a look around the college and talk to us about your options.

MAY-JUNE 2024

You're likely to be sitting your exams, so good luck! Remember to keep calm and know that we'll be here to support you when you leave school.

JUNE 2024

We'll email you asking you to pre-enrol at the college. Don't worry, this is a simple online form which will help us prepare for your arrival at the start of the Autumn Term.

JULY 2024

Many of our courses provide welcome sessions, giving you an opportunity to meet your new classmates and teachers ahead of joining us in September.

AUGUST 2024

At the start of the month we'll email you with your enrolment appointment and start date.

You'll receive your GCSE grades this month. We very much hope you get the grades you want, but if you don't – don't panic! Contact us and we'll support you in your next steps.

AUGUST-SEPTEMBER 2024

You'll be invited to attend enrolment, which is when you'll officially sign up as a Brighton MET student!

SEPTEMBER 2024

Welcome to college and the next exciting chapter of your life!

GET IN TOUCH

If you have any questions or concerns, our admissions team will be happy to help you.

Call: 01273 667704

Email: admissions@gbmc.ac.uk

EVERYTHING ELSE YOU NEED TO KNOW

Choosing your course is a big decision, but you also need to choose the right college for you.

Here at Brighton MET, we offer a range of support services and opportunities, designed to enhance and expand your experience with us.

On the following pages, you'll find information about the whole college experience!



Financial Help	110
Course Fees	111
Supporting You	112
Additional Learning Support	114
Preparing You For Your Future	116
Facilities: Central Brighton	118
Facilities: East Brighton	120
Student Life	122
Student Voice	124
How To Get To Us	126
College Highlights	127
Open Events	127

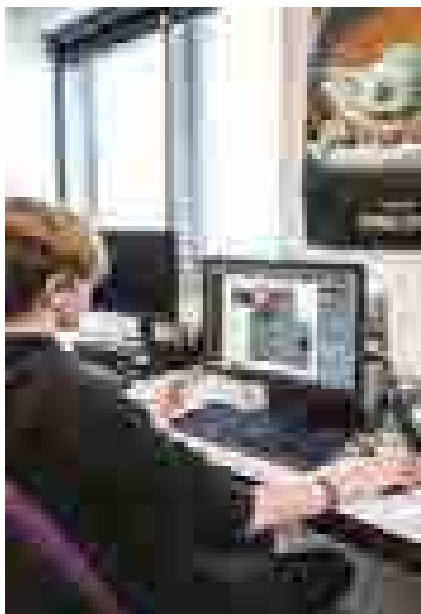
FINANCIAL HELP

We're here to help you get the financial support you need.

Our Student Finance Team can provide you with specific advice and information about grants that may be available to you.

Contact Us

To find out more, contact our team by email: studentfinance@chigroup.ac.uk or call the college on 01273 667788 and ask to speak to the Student Finance Team.



LEARNING SUPPORT GRANT & BURSARY

This is our bursaries scheme for 16 to 18 year olds. This grant is funded by the Education Funding Agency and administered by the college.

This grant could provide you with:

- > Access to free or subsidised travel
- > Free or subsidised equipment, books or resources
- > Free or subsidised childcare
- > Free UCAS admin fees
- > Free college meals
- > Contribution towards enrichment activities linked to your course

If you're aged 16 to 18 and are currently in care, just leaving care, receive Income Support or Universal Credit, or receive ESA (Employment Support Allowance) or Universal Credit and PIP (Personal Independence Payments), you may be eligible for the Vulnerable Bursary via the Learning Support Grant.

Financial help is also available for students aged 19 or over.

ADVANCED LEARNER LOAN

If you're thinking of progressing onto a full-time course and are aged over 19, you may qualify for this loan.

To be eligible, you must:

- > Be aged 19 or over at the start of your course
- > Be a UK or Irish national, or have settled or pre-settled status under the EU Settlement Scheme or indefinite leave to remain
- > Be applying to study on a course which is Level 3* or higher

* Defined by the government as a maximum of three A-levels; Access to HE course; Level 3 and/or Level 4 certificates or diplomas; an advanced or higher apprenticeship.

COURSE FEES

IF YOU'RE 16-18

If you're a home student* and are under 19 at the beginning of your courses, you won't have to pay tuition or exam fees for most courses. You will have to pay exams if you need to resit an exam.

You may need to pay for course equipment and materials. You'll be advised of this at your interview.

IF YOU'RE 19 OR OVER

You will generally be asked to pay tuition or exam fees, although you may be eligible to receive help with course fees.

If you don't hold a Level 2 qualification (such as five GCSEs at grades 9-4/A*-C) or a Level 3 qualification (e.g. two A-levels) and are under 24 years old, you may be able to get a substantial reduction in fees.

If you select a course leading to a basic skill qualification (maths or English), there will be no tuition fees to pay.

You may also be eligible for free or discounted courses at Entry Level or Level 1, if you're aiming for a full Level 2 course, do not already hold a qualification at this level and are under 24 years old. Also, if you're studying at Level 2 or below and are unemployed, or on a low wage, you may be eligible for a substantial reduction in fees.

ADVANCED LEARNER LOAN

If you're thinking of progressing onto a full-time course and are aged over 19, you may qualify for this loan.

To be eligible, you must:

- > Be aged 19 or over at the start of your course
- > Be a UK or Irish national, or have settled or pre-settled status under the EU Settlement Scheme or indefinite leave to remain
- > Be applying to study on a course which is Level 3** or higher

REFUNDS

Courses lasting longer than 12 weeks:

If you choose to leave your course within 28 days of it starting and the course is longer than a term, a refund may be made of the fees paid, minus a £50 administration charge along with any payments made to examining or other bodies that cannot be reclaimed by the college. If you choose to leave your course more than 28 days after the course start date, you will be liable for the full cost of the course.

For more information, including rules and guidelines for applying, on the Advanced Learner Loan website (www.gov.uk/advanced-learner-loan).

Courses which are under 12 weeks:

If you're booked on a short course and cancel at least 14 days before the course start date you will receive a refund of the course fee minus a £50 administration fee. If you cancel with less than 14 days' notice or leave the course after it has started, no refund will be given.

Exceptional circumstances

Where there are exceptional personal circumstances, an application for a refund may be made to SalesLedger@Chichester.ac.uk with supporting evidence.

If a course is cancelled by the college, you'll receive a full refund of fees paid.

International Students

International students should contact our International Department for fee information on



+44 (0)1243 786321

* Home students are people who have already lived in the UK or EEA for a minimum of three years for reasons other education. If you are an EEA national, you must have obtained either pre-settled or settled status under the EU Settlement Scheme.

** Defined by the government as a maximum of three A-levels; Access to HE course; Level 3 and/or level 4 certificates or diplomas (eligible for a loan); an advanced or higher apprenticeship.

SUPPORTING YOU



STUDY PROGRAMME

At Brighton MET college, we provide you with more than just your chosen qualification. If you're aged 16-19, you'll have a specialised study programme.

This includes work experience and pastoral support, as well as development of your employability skills.

If you haven't achieved a grade 4 or above in maths and/or English, you'll also be supported as you work towards this (find out more on page 101)

PASTORAL SUPPORT TUTORS

While at college, you'll be supported by your pastoral support tutor. Every student, aged 16-19, has a tutor who will provide you with 1:1 support for your personal development.

You'll attend regular interactive workshops, which have been developed to cultivate your knowledge and understanding of the world around you. Topical discussions could include environmental issues, respect and tolerance, health, money management as well as keeping safe online.

Your tutor will also be a point of contact for you if you need extra help or have a concern that could be affecting your time at college and will be able to offer information about support services both at college and outside of college.



WORK EXPERIENCE

All of our students have the opportunity to take part in work experience or work-related learning. This helps you become 'work ready' and looks great on your CV.

It also gives you valuable insight into the world of work and could help you to decide on your future career path.

WELLBEING & SAFEGUARDING

Your physical and mental wellbeing, as well as your safety, is extremely important. We have the strongest commitment to making sure our students experience a welcoming, safe and secure environment and we have robust policies and procedures in place to safeguard you.

Our College Community Support Officer and Student Wellbeing Co-ordinator are on-site to help you stay safe, and we have a number of drop-in services offering help and support.

ADDITIONAL LEARNING SUPPORT

HELPING YOU GET THE SUPPORT YOU NEED TO THRIVE AT COLLEGE

If you need extra help with your studies, our Additional Learning Support Team can help you and your lecturers tailor support to aid in moving you towards independence.

This could include providing in-class or out-of-class support for literacy, numeracy and study skills, working with a Learning Support Assistant (LSA) in class or Communication Support Worker (CSW).



SPECIALIST SUPPORT

Specialist support is available for students with additional needs, including neurodiverse conditions such as Dyslexia, as well as learning and physical disabilities.

We offer a range of adaptive equipment and software for students with hearing or visual impairments.

Facilities such as ramps, hoists, lifts and specialised toilets are available.

Please talk to use about your support needs as soon as possible, so we can discuss your requirements to help you study and achieve on your course.

You are also very welcome to visit the college, meet with our staff and view our facilities.

ASC PROVISION

Social and communication skills are an essential part of everyday life, and we have experienced and qualified lecturers on hand to teach social and communication skills in structured sessions and workshops.

EXAM SUPPORT

We know some students will require special arrangements when taking exams and support can be provided, in accordance with awarding bodies' guidelines. Dependent on your assessment results, scribes and readers may be available, and assistive equipment may be borrowed.

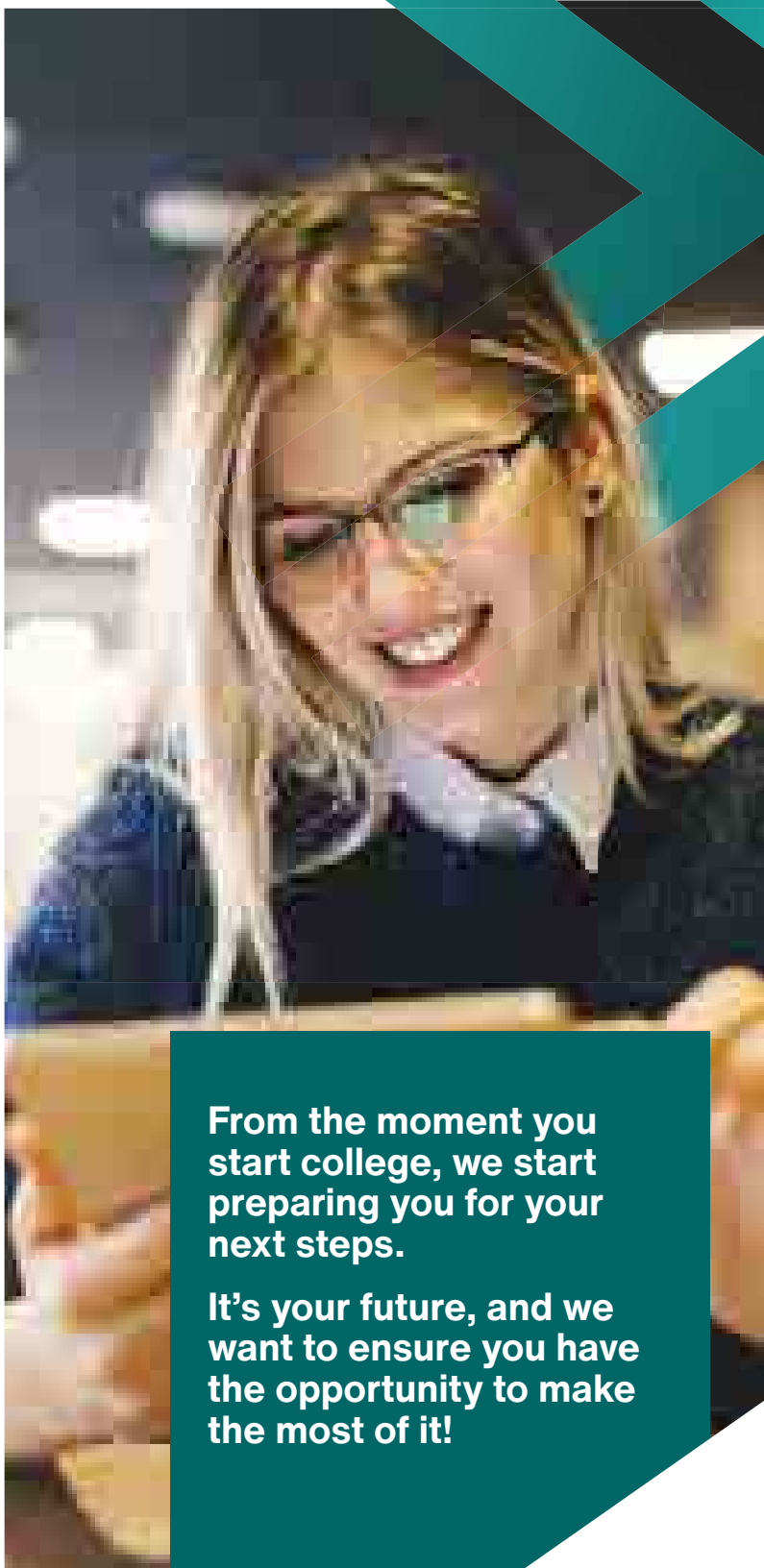
YOUNG PEOPLE WHO ARE 'CARE EXPERIENCED'

We have additional support in place for young people who are care experienced, as well as young refugees and asylum seekers to assist their transition and journey through college.



For more information, please contact 01273 667788 ext 447 or 583 or email learningsupportbrighton@gbmc.ac.uk and ask to speak to our Additional Support Team.

PREPARING FOR YOUR FUTURE



From the moment you start college, we start preparing you for your next steps.

It's your future, and we want to ensure you have the opportunity to make the most of it!



CAREERS INFORMATION

We provide access to careers and higher education fairs, as well as arrange talks, visits and guest speakers – all designed to demonstrate the choices available to you.

We'll also deliver workshops that will help you to develop life skills that will prepare you for future work or study.

CAREERS GUIDANCE

Take advantage of a one-to-one careers guidance meeting with one of our advisors. They'll help you to explore your options and can offer tailored, impartial advice that's individual to you.

The team will also help you to:

- > Identify your skills
- > Write a CV
- > Learn how to search for jobs
- > Develop your interview techniques
- > Promote yourself

CAREER COACH

Use Career Coach – an online resource – to assess your skills and see how you match up with a potential career, build your CV and research career information. You'll even find information on relevant courses and jobs to help you reach your career goals.

Visit our website – brightonmet.ac.uk – and search 'Career Coach' to find out more.



SPEAK TO US

Email: careers@gbmc.ac.uk

FACILITIES

CENTRAL BRIGHTON CAMPUS





Situated in the North Laine, our Central Brighton Campus is just minutes away from the vibrant mix of shops, cafés and entertainment that makes Brighton unique.

All of our creative and hair and beauty courses are taught in our new £21 million centre, opened in summer 2021. This stunning new extension to the existing tower features an impressive atrium to display student work. Our plaza is a large outdoor space that is open to the public and hosts exhibitions, including installations for the Brighton Festival.

HAIR & BEAUTY SALON

We have six new hair & beauty salons and one brand new state-of-the-art clinic, providing a professional working environment for our students to offer a range of services and treatments to the public at a discounted rate.

KITCHEN FACILITIES AND RESTAURANT

We have four industry-standard training kitchens and a working fine-dining restaurant, The Gallery. The restaurant is run by catering and hospitality students and is open to the public, delivering a professional service.

CREATIVE RESOURCES

New art and photography studios with traditional darkrooms

Mac-based graphic design suite
PC-based 3D multimedia suite with motion capture

Top-of-the-range digital facilities with video cameras, recorders and digital SLRs

Video studio with green screen and lighting rig

An on-site art shop for students – the cheapest supplier in Brighton

Virtual reality cave and headsets

LEARNING RESOURCE CENTRE

Our Learning Resource Centre (LRC) provides you with access to an extensive range of books and periodicals. There are also over 80 computer stations equipped with electronic resources, e-books and access to online learning resources.

REFRESHMENTS

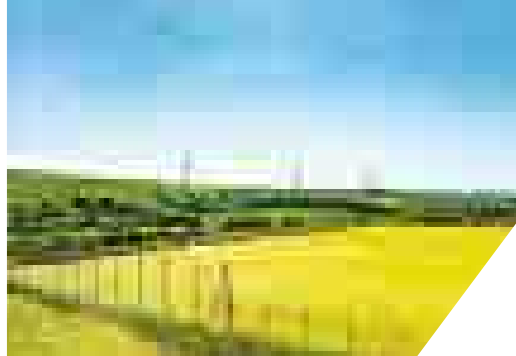
Our newly refurbished canteen offers nutritious breakfasts, lunches and dinners at fantastic value. The coffee shop serves speciality teas and coffees and is a great place to socialise with friends.

FACILITIES

EAST BRIGHTON CAMPUS



Set at the edge of the beautiful Brighton countryside, our East Brighton Campus is just minutes away from the array of shops, restaurants and entertainment at Brighton Marina. It is also the home of our £9 million Construction and Trades Centre.



CONSTRUCTION AND TRADES CENTRE

We have specialist facilities for carpentry, electrical, and plumbing. The Centre also houses state-of-the-art workshops and equipment, designed to provide students with learning facilities which simulate the workplace.

We launched a decarbonisation academy in 2023, established to teach green construction techniques and sustainable building practices. Teaching facilities include a training bungalow with features such as solar panels and ground source heat pump for students to learn in.

SPORT FACILITIES

- > Full-size all-weather and grass pitches
- > Sports teams such as football, netball, basketball, rugby and boxing
- > Full-size boxing ring
- > Fully-equipped gym on-site for students to use free of charge

REFRESHMENTS

- > Our canteen offers nutritious breakfasts, lunches and dinners at fantastic prices, as well as speciality teas and coffees
- > Communal spaces to meet friends and enjoy break times
- > Vending machines for drinks and confectionery





STUDENT LIFE

MORE THAN AN EDUCATION, IT'S A WAY OF LIFE

College is about more than studying, it's also about discovering new things, making new friends and being part of something bigger.

You'll have loads of opportunities to get involved with activities which will enrich your time at college.

TRAVEL

Our Student Experience Team arrange days out and trips throughout the year, from Thorpe Park to the Harry Potter Studios.

If that's not enough, we also organise trips abroad. Our annual visit to Disneyland Paris is always popular! You can also be a volunteer abroad, joining in with turtle conservation efforts in Greece or our work with the Walk Centre in Kenya.



ACTIVITIES & CLUBS

Our Student Experience Team are here to make sure you have the opportunity to access to all kinds of activities that will stretch and challenge you, as well as help you to find your tribe.

Activities across the group range from scuba diving to rock climbing, from beginner's guitar lessons to 'Dungeons & Dragons' groups. Learn to knit if that is your thing or join our active LGBTQIA+ groups.

If we don't already run the session you are looking for then talk to your Student Experience Coordinator and they'll help to explore the ideas with you further. We're always on the lookout for great ideas.

As part of our Xtra programme, we also organise fundraising activities throughout the year and college wide activities – from our annual Freshers' Fair to Eco-Swap events. Come and join us in supporting the effort to raise money and awareness for some very worthwhile causes.



YOUR COLLEGE YOUR VOICE



STUDENT VOICE IS EMBEDDED IN ALL THAT WE DO

We want to ensure you get the best experience possible. That's why our student union is so important to us and we work to make sure your voice is heard at every level.

BRIGHTON MET STUDENT UNION

As a student at Brighton MET, you automatically become a member of our student union – and it's up to you just how involved you want to be.

With an elected Student President and a team of student executives, the Brighton MET Student Union plays an incredibly important role in all college decisions.

Follow the Brighton MET
Student Union on:

 @studentunionccg



STUDENT EXECUTIVE

The Student Executive Team is made up of a small number of course reps and are the student leaders of the college.

The Executive – or ‘exec’ – are led by the Student President and meet regularly to discuss key issues and support the running of the Brighton MET Student Union.

They also come together with the student executives from all Chichester College Group colleges to talk about issues impacting the whole group, working together to champion student voice and talk to senior leaders at the group.

YOU ARE WELCOME

College should be a supportive and caring environment. At Brighton MET we believe in equality of opportunity and we strive to create a place where everyone feels safe and welcome.

There is an LGBTQ+ support group at Brighton MET which offers a safe space for discussion and expression. It's a place for sharing personal stories and wisdom, where all experiences are listened to and valid.

STUDENT PRESIDENT

In June, student elections are held to decide who will take the mantle of Student President for the following academic year.

Your Student President represents you and is the spokesperson of the students. They meet regularly with the principal and governing body to provide valuable feedback on issues facing students at the college, helping to influence the decisions being made at the highest levels.

COURSE REPRESENTATIVES

Every course at college has a student representative – it's a great role to take on. Representatives – or ‘reps’ are elected during the third week of the first term and will serve the students on their course by gathering feedback and attending student conferences, delivering the views of your classmates directly to college management. Course reps also meet regularly with heads of learning to discuss issues that are particular to their area. Anyone can put themselves forward and courses will vote to elect their rep.



HOW TO FIND US



Getting to Brighton MET is easier than you think

CENTRAL BRIGHTON CAMPUS

 **Pelham Street, Brighton**
East Sussex, BN1 4FA

Central Brighton Campus is less than five minutes' walk from Brighton station.

Local bus routes to London Road include:
5, 5A, 5B, 17, 21, 22, 26, 33, 40, 46, 270, 271.

More information can be found at Brighton & Hove Buses: www.buses.co.uk



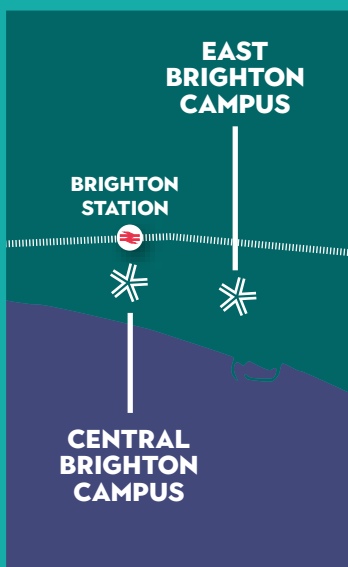
EAST BRIGHTON CAMPUS

 **Wilson Avenue, Brighton,**
East Sussex, BN2 5PB

Our East Brighton Campus on Wilson Avenue is located next to Stanley Deason Leisure Centre and is a short distance from Brighton Marina Village.

Bus routes to Wilson Avenue include: 1, 7, 21 and 21A.

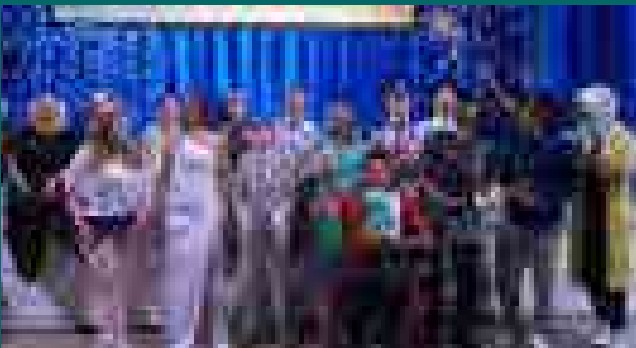
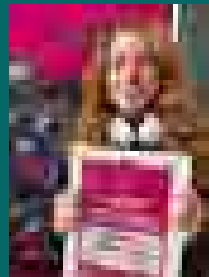
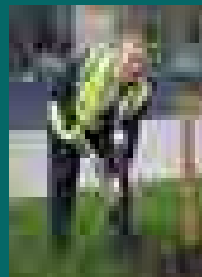
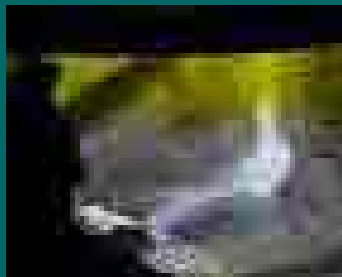
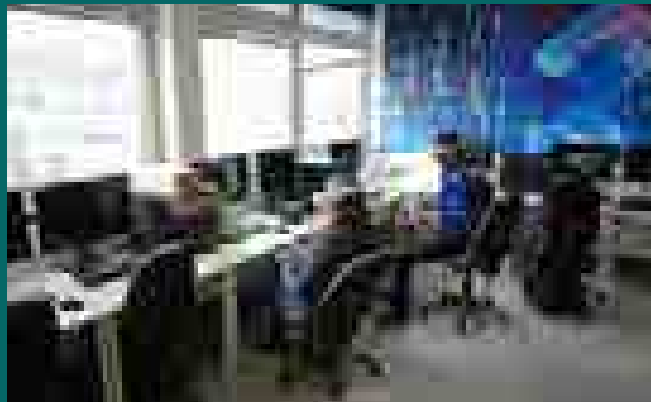
Bus service to East Brighton Campus:
Brighton MET runs a regular bus service between our main campus in Pelham Street (Central Brighton Campus) and our campus on Wilson Avenue (East Brighton Campus). This is free to all Brighton MET students on production of their ID card.



*Please note, parking and travel information is correct at the time of publication but may be subject to change



COLLEGE HIGHLIGHTS



Choosing Brighton MET College means you'll be part of a vibrant community, and we encourage you to embrace college life to the fullest! Just check out some of our highlights of the past year.

YOUR FUTURE
MADE HERE YO
YOUR FUTURE MA
YOUR FUTURE MA
YOUR FUTURE MA

OPEN EVENTS



01273 667788
admissions@gbmc.ac.uk
brightonmet.ac.uk

Wednesday 11 October 2023
4.30-7pm

Saturday 18 November 2023
10am-1pm

Tuesday 12 March 2024
4.30-7pm



We look forward to welcoming you
at one of our open events. For more
information scan the QR code or visit:

brightonmet.ac.uk

Proud to be part of

CCG | Chichester
College
Group