

YOUR FUTURE
MADE HERE YOUR
UR FUTURE MA
DE HERE MADE
**YOUR FUTURE.
MADE HERE.**
YOUR FUTURE
MADE HERE
UR FUTURE MA
DE HERE MADE
HERE YOUR FUTURE



WHY CHOOSE BRINSBURY COLLEGE?

1 PART OF A HIGH-PERFORMING GROUP OF COLLEGES

Brinsbury College is proud to be part of Chichester College Group. We were rated as Outstanding in all areas by Ofsted following an inspection of Brinsbury, Chichester, Crawley and Worthing Colleges in March 2020 (prior to the group's merger with Brighton MET and Northbrook College in August 2022 and the opening of Haywards Heath College in September 2020).



2

COURSES DESIGNED WITH INDUSTRY IN MIND

We work closely with local employers and industry experts to ensure our courses meet their needs, helping to support your future employability.

3

FANTASTIC FACILITIES

We have a host of well-equipped, industry-ready facilities for you study in – from a state-of-the-art forge or working farm to a modern animal centre and equine facility. And we're continuing to invest in our study facilities!

4

FEEL SUPPORTED AS YOU STUDY

You won't be alone at Brinsbury College. Our pastoral support tutors will provide you with support and guidance throughout your time at college. And we have an amazing careers team on hand to help set you up for the future!

5

INSPIRATIONAL TEACHING

Our staff are dedicated, passionate and experts in their industries – with a wealth of experience and lots of contacts!



6

BE PART OF SOMETHING SPECIAL

When you're not studying, you'll have lots of opportunities to get involved with a range of activities. From day trips and trips abroad, to charity fundraising and clubs, our fantastic student union and student experience team will make sure you're at the heart of our college community.

WELCOME



I'm delighted you are considering studying at our beautiful land-based college.

Here at Brinsbury College, you'll find a passionate community of staff who will inspire you, challenge you and support you as you strive towards achieving your ambitions.

We make a commitment to you to support you, to nurture your curiosity and help you to grow in confidence as you develop your skills, enabling you to progress successfully into your dream career or university.

Our students, past and present, speak highly of their experience at Brinsbury College and of their time here with us. We have consistently high achievement rates and exceptional routes into industry and universities.

We believe in providing you with endless opportunities in an inclusive environment where everyone can be successful.

You'll find lots of information in this guide, and even more on our website – www.brinsbury.ac.uk.

And we'll be pleased to see you at one of our open events, where you'll be able to look around our campus and see for yourself our fantastic facilities, meet our amazing staff and chat to our inspirational students.

I look forward to welcoming you when you begin your journey at beautiful Brinsbury College.

Sally Challis-Manning MBE
Principal

CONTENTS

OUR COURSES

Agriculture	14
Animal Care	18
Blacksmithing	22
Construction	26
Equine	30
Forestry & Arboriculture	34
Furniture, Upholstery & Soft Furnishings	38
Horticulture	42

All information, including course lists, stated in this guide is correct at time of printing (August 2023) and is subject to change without notice.



INFORMATION

Welcome from our Principal	4
Introduction to Course Types	6
Entry Requirements	8
How to Apply	10
<hr/>	
T Levels	46
Apprenticeships	50
Higher Education	52
Access to Higher Education	54
Maths & English	55
SEND Foundation Programmes	56
Chichester College Group	58
Key Dates	60
Financial Help	62
Course Fees	63
Supporting You	64
Additional Learning Support	66
Preparing You for Your Future	68
Our Campus	70
Our Facilities	72
Student Life	74
Your College, Your Voice	76
How to Find Us	78
College Highlights	79
Open Events	Back Cover

INTRODUCTION TO

COURSE TYPES

There are lots of options available to you when you leave school - with a vast range of courses in a variety of subjects. So, where do you start?



WHEN CHOOSING A COURSE, IT'S WORTH CONSIDERING:

- > What do you want to achieve?
- > What type of career do you want?
- > What subjects do you enjoy?
- > What are your strongest subjects?
- > Do you prefer hands-on or classroom-based learning?
- > How much work experience do you want?

We offer a range of courses from entry level to university-level, including vocational certificates and diplomas, T Levels and apprenticeships. We also offer functional skills qualifications and GCSE maths and English.

Our admissions team can provide advice depending on your interests, predicted GCSE results and plans for the future. And we'd really recommend visiting us at one of our open events to find out more about our courses and our college!

Here's a short guide to help you understand the different pathways, which could help you to decide which type of course is right for you.

A-LEVELS

Subject-based level 3 qualifications, A-levels are ideal if you want to study more than one subject, as you can normally pick two or three subjects.

They are studied across two years and are graded A*-E, with your grades being determined by your final exam results at the end of your second year. While we don't offer A-levels here at Brinsbury College, you'll find a wide range of A-levels at our sister colleges in Chichester, Haywards Heath and Worthing.



T LEVELS

These are newer qualifications, which launched in 2020 and have been developed with employability in mind – helping you to build the skills industry need.

T Level qualifications are equivalent to three A-levels and are studied across two years. You'll receive split learning, spending roughly 80% of your time in the classroom and 20% on an industry placement.

You can discover more about T Levels on pages 46-49.

VOCATIONAL

Vocational courses, which include UAL, City & Guilds and BTEC diplomas and NVQs, are great for students who prefer practical learning – and they are highly respected by employers.

They relate to a particular profession, area of work or technical skill. You'll study one subject, gaining the skills and knowledge you need for that chosen occupation. You'll be taught in our specialised facilities by our fantastic staff – all industry experts.

Vocational courses can be taught at different levels (depending on subject area and course availability), including:

LEVEL 3

Level 3 extended certificates are equivalent to one A-level, diplomas are equivalent to two A-levels, while level 3 extended diplomas are equivalent to three A-levels.

How you'll be assessed will vary depending on the specific courses. Generally, it will be through a combination of practical assessments, projects, coursework and tests throughout the duration of your course.

LEVEL 2

Level 2 vocational qualifications are a good progression route onto level 3 courses for students who may not meet the entry requirements, giving you practical training in your chosen skill or profession. A level 2 qualification is similar to having GCSE grade equivalents at grades 4 or higher.

LEVEL 1

Suitable for students who haven't quite achieved the entry requirements for a level 2 course or higher, these courses will give you a grounding in your chosen subject and help you to progress into level 2 courses. Generally speaking, a level 1 qualification is similar to having GCSE grade equivalents at 1-3.

ENTRY LEVEL

An entry level vocational course generally has no, or low, formal entry requirements, and can be ideal for starting your training while developing your maths and English skills.

ENTRY REQUIREMENTS




The information below outlines the entry requirements you'll generally need to be accepted onto the courses that we offer, however some courses may have additional requirements such as specific qualifications in relevant subjects, a portfolio of work, completion of a technical test or audition.





This specific information can be found on the individual course pages on our website.

You will have a course interview or application review meeting, a one-to-one conversation that provides more information and ensures you find the right course for you.

We are an inclusive college, which means we will do everything we can to ensure that all applicants will have a place on a course at our college; the level of study will be dependent on prior achievement and GCSE results.



LEVEL	ENTRY REQUIREMENTS	PROGRESSION
	<ul style="list-style-type: none"> > No formal qualifications required > College readiness and skills level will be assessed at interview 	<ul style="list-style-type: none"> > Level 1
	<ul style="list-style-type: none"> > At least two GCSEs grade 2 or above, or an achievement of an Entry level qualification in a relevant subject > Some courses may require GCSE maths or English at grade 1 or above 	<ul style="list-style-type: none"> > Level 2 > Intermediate Apprenticeship > Employment
	<ul style="list-style-type: none"> > At least three GCSEs grade 3 or above, including maths and English > Some courses may require GCSE maths or English at grade 1 or above 	<ul style="list-style-type: none"> > Level 3 > Advanced Apprenticeship > Employment

LEVEL	ENTRY REQUIREMENTS	PROGRESSION
	<p>Level 3</p> <ul style="list-style-type: none"> > At least four GCSEs grade 4 or above, including maths and English or completion of relevant level 2 qualification at merit or above > Some courses may require specific GCSEs in relevant subjects at grade 4 or above <p>T Levels</p> <ul style="list-style-type: none"> > To study T Levels, you'll need at least five GCSEs at grade 4 or above, including maths and English <p>Access to HE (19+)</p> <ul style="list-style-type: none"> > To study Access to HE, you'll generally need GCSE maths and English language at grade 4/C or above. Some subjects will also require GCSE grade 4/C or above in science 	<ul style="list-style-type: none"> > Level 3 (year 2) > Level 4 or 5 > Degree-level courses > Higher Apprenticeship > Employment
	<p>Higher National Certificate (equivalent to the first year of a Bachelor's Degree), NVQ/BTEC Level 4, Professional Award</p> <ul style="list-style-type: none"> > Relevant level 3 qualification or A-levels in relevant subjects (minimum grades vary by course) > At least five GCSEs at grade 4 or above including maths and English 	<ul style="list-style-type: none"> > Level 5 > HND/Foundation Degree > Higher Apprenticeship > Employment
	<p>Higher National Diploma (equivalent to the second year of a Bachelor's Degree), Foundation Degree</p> <ul style="list-style-type: none"> > Relevant level 4 qualification or second year progression from the related level 4 course > Relevant level 3 qualification or A-levels in relevant subjects (minimum grades vary by course) > At least five GCSEs at grade 4 or above including maths and English 	<ul style="list-style-type: none"> > Level 6 > Top Up Degree > Employment
	<p>Top Up Degree or Bachelor's Degree</p> <ul style="list-style-type: none"> > Relevant level 5 qualification or prior learning/experience in a related subject > Relevant level 3 qualification or A-levels in relevant subjects (minimum grades vary by course) > At least five GCSEs at grade 4 or above including maths and English 	<ul style="list-style-type: none"> > Masters Degree > Employment

HOW TO APPLY

Choosing and applying for your course may seem a little daunting, but don't worry – we're here to guide you through the process.

The easiest way to apply is online, by visiting our website. Here you can search for the subjects you're interested in and discover more about the course including specific entry requirements.

So, you've made your choice and you're ready to click on the 'apply now' button. What happens next?

TOP TIP

If you can, use a personal email address for your application, not your school email – we'll be sending important information in the summer months to you by email, so you'll need to use an account that you have access to after you leave school.

SET UP YOUR ACCOUNT

1

You'll be prompted to create an account which will allow you to log in to our Application Tracker website whenever you wish. This will provide you with important information and you can also track the progress of your application.

APPLY

2

Complete each step of the application form and then submit your completed form. We'll let you know when we've safely received it with an acknowledgement email.

INTERVIEW

3

Before offering you a place at college, we'll invite you to an interview to give you advice about your application. The interview is normally in person but is sometimes by telephone or online.

ACCEPT YOUR PLACE

4

Offers will be sent to you via the email address you have provided. The offer will either be conditional, based on predicted GCSE grades, or unconditional. You'll need to reply to your offer email within 14 days to secure your place.

WHAT NEXT?

5

In June, we'll send you an email asking you to complete our pre-enrolment form. This asks for more information about your circumstances and will allow us to enrol you quicker in September.



WHAT CAN I EXPECT FROM MY INTERVIEW?

Don't worry! Our interviews are informal, supportive one-to-one meetings designed to make sure the course you've applied to is right for you, find out more about you – and give you the opportunity to ask any questions you may have.

You don't have to come alone, if you feel more comfortable bringing someone with you that's totally ok.

WHAT IF I CHANGE MY MIND?

If you realise the course you've applied for isn't right for you, just get in touch. There are lots of options and we can help you find the right one for you.

EXPERIENCE BRINSBURY COLLEGE

The best way to find out about the college is to visit us! Make sure you come along to one of our open events to meet our teaching staff, discuss your options and see the college, even meet some of our students. You'll find dates on the back cover of this guide, or on our website.

GET IN TOUCH

If you have any questions or concerns, our admissions team will be happy to help you.

Call us on:
01243 786321

Email us at:
admissions@chichester.ac.uk



OUR COURSES

We have a wide range of courses to choose from, across a host of varied and interesting subject areas.

Read on to find out more about what we can offer you and discover the options available to you to choose from.

AT BRINSBURY COLLEGE, YOU'LL BE ON COURSE FOR LIFE!

CHOSEN YOUR COURSE?

Apply online at: brinsbury.ac.uk

GOT QUESTIONS?

We're here to help!
Give us a call on: 01243 786321

VOCATIONAL 14

Agriculture	14
Animal Care	18
Blacksmithing	22
Construction	26
Equine	30
Forestry & Arboriculture	34
Furniture, Upholstery & Soft Furnishings	38
Horticulture	42

OTHER QUALIFICATIONS 46

T Levels	46
Apprenticeships	50
Higher Education	52
Access to Higher Education	54
Maths & English	55
SEND Foundation Programmes	56

AGRICULTURE



**Farming
success**



Scan me to
find out more
about our
courses



Embark on a promising journey into a multi-billion pound industry.

The agricultural sector plays a crucial role in the UK's economy, supplying over 60% of the nation's food. By selecting agriculture as your field of study, you become an integral part of this dynamic industry.

Our comprehensive program delves into the intricacies of crop cultivation, livestock rearing, machinery operation, and farm management. Supported by our knowledgeable staff, you will acquire the necessary skills for a career that extends far beyond the boundaries of a farm.

Join us and unlock a world of opportunities in this diverse and essential sector.



COURSES

Agriculture

Agriculture - Level 1 Diploma

Agriculture - Level 2
Technical Certificate

Agriculture, Land Management
& Production (Crop and Plant
Production) - Level 3 T Level

Agriculture, Land Management &
Production (Livestock Production)
- Level 3 T Level



Find out more about
T Levels on p46



OUR FACILITIES

Immerse yourself in the world of modern farming as our commercial working farm becomes your classroom.

Experience hands-on learning across all aspects of farming, gaining practical knowledge and skills in a real-world setting.

We have embraced the latest technological advancements, providing you with access to drones, automated mini classroom vehicles, state-of-the-art tractors equipped with variable rate fertiliser spreading technology, and even VR (virtual reality) headsets.

Prepare for a future-focused education where innovation meets agriculture, ensuring you're equipped with the skills and expertise to thrive in the ever-evolving farming industry.

Our farm boasts a cutting-edge milking parlour, offering first-hand exposure to modern dairy technologies and practices.





CAREER SPOTLIGHT

Farmer/Farm Manager:
£21,000-£50,000*

Manages the running of the farm, growing crops and raising livestock for food production.

*National Careers Service, 2023

FUTURE CAREERS

Agricultural Inspector

Farm Manager

Livestock Manager

Machine Operator

Rural Surveyor



OUR STUDENTS SAY...

“Choosing Brinsbury was the best decision of my life. Working on the college farm, and subsequently getting my first farm job while at college, helped me to see more of the industry.”

Barney, studied agriculture and now works as a farm manager

ANIMAL CARE



Unleash your
passion for
animals



Scan me to
find out more
about our
courses



Get closer to nature with our animal care and animal management courses.

You'll learn about different species and their care and welfare, studying and exploring animal behaviour.

Careers in animal-related industries are diverse, and you have the opportunity to work in many different fields. That's why our courses are designed to teach you a variety of transferable skills to help you achieve your ambitions.

COURSES

Animal Care

Animal Care - Level 1 Diploma

Animal Care
- Level 2 Laser Progression

Animal Care
- Level 2 Technical Certificate

Animal Management

Animal Management - Level 3
Advanced Technical Diploma

Animal Care & Management
- Level 3 T Level

Animal Management (Animal)
- Level 5 Higher National Diploma

TL Find out more about
T Levels on p46





OUR FACILITIES

You'll work with a huge variety of animals, who all call our purpose-build animal centre home.

From reptiles and amphibians to rodents and rabbits, as well as alpacas, donkeys, goats, poultry and ferrets – we care for a range of animals.

FUTURE CAREERS

Animal Nutritionist

Animal Rescue
Centre Worker

Animal Welfare Inspector

Veterinary Nurse

Wildlife
Conservation Officer

Wildlife Crime Officer

Zookeeper

CAREER SPOTLIGHT

Veterinary Nurse:
£18,000-£26,000*

Supports vets by caring for sick and injured animals.

Zookeeper:
£14,000-£25,000*

Cares for animals in zoos, safari parks and aquariums.

*National Careers Service, 2023



CRIAS AT BRINSBURY

In May 2023, we were delighted to announce our first-ever alpaca births at Brinsbury! A trio of crias (baby alpaca) - Maria, Maisie and Murphy - were born to Mia, Mollie and Mabel, to the joy of our students and staff.



OUR STUDENTS SAY...

“Describing my two years at Brinsbury is easy, as they are the best years I’ve had – full of amazing experiences, opportunity and development. Knowing my dream career started there is a great feeling.”

Ross, studied animal management and now works as a small mammal keeper



BLACKSMITHING



Spark your
inspiration



Scan me to
find out more
about our
courses



Brinsbury College stands out as a unique location, offering exclusive courses in the captivating field of blacksmithing and farriery.

Explore the vast range of opportunities available as a professional blacksmith or farrier. At Brinsbury, you will receive comprehensive training that encompasses all aspects of this specialised craft.

As a blacksmith, you will immerse yourself in the art of designing and creating intricate metalworks, igniting your creativity and craftsmanship. Our farrier program focuses on the essential aspects of equine hoof care, providing you with extensive knowledge of equine anatomy and honing your skills in shoe making and fitting.

Join us at Brinsbury to unlock your potential in these distinctive disciplines, where your passion for metalwork and equestrian care will flourish under the guidance of our expert team of lecturers.

COURSES

Blacksmithing

Blacksmithing & Metalworking (Blacksmith Route)
- Level 2 Diploma

Blacksmithing & Metalworking (Farriery Route)
- Level 2 Diploma

Blacksmithing & Metalworking
- Level 3 Subsidiary Diploma

Blacksmithing & Metalworking
- Level 3 Extended Diploma

Craft and Design (Jewellery Maker)
- Level 3 T Level



Find out more about
T Levels on p46





OUR FACILITIES

Step into our state-of-the-art forge at Brinsbury College, where you will embark on a journey to master the ancient arts of blacksmithing and farriery.

Our modern and well-equipped facility provides the perfect environment for you to hone your skills and unleash your creativity.

Immerse yourself in a world of diverse techniques as you work with coke, chip, and gas forges, and embrace the latest advancements with our new induction forges. Gain hands-on experience and learn the intricate processes involved in shaping and manipulating metal, transforming raw materials into exquisite works of art.



CAREER SPOTLIGHT

Blacksmith:
£variable*

Works with different metals to make and repair decorative, industrial and everyday items.

Farrier:
£variable*

Makes and fits horseshoes and cares for horses' hooves.

*National Careers Service, 2023

FUTURE CAREERS

Artistic Blacksmith

Blacksmith

Farrier

Heritage and Restoration Worker

Sheet Metalworker

Welder

MAKING AN ENTRANCE

Our students have the opportunity to work on a whole host of live briefs and projects – and when you visit our campus, you'll be greeted by their work! Our talented blacksmith students designed and made the stunning metalwork sculpture that takes pride of place at the main entrance!

OUR STUDENTS SAY...

98%

of our farriery, agriculture, horticulture and arboriculture students said they found their lecturers to be helpful and approachable*

(*according to the 2023 Student Survey)

CONSTRUCTION



Build a future
you can be
proud of



Scan me to
find out more
about our
courses



Begin your path to mastering a trade at Brinsbury College, where we are dedicated to nurturing your skills and knowledge for the construction industry.

Our comprehensive programmes focus on developing your technical abilities and providing an understanding of the industry's demands, equipping you for a successful career in construction.

Join us to lay the foundation for your future in this dynamic and rewarding field.



COURSES

Construction

Construction Skills with Brickwork, Plumbing, Electrical and Carpentry - Level 1 Extended Certificate

Construction Skills with Brickwork, Plumbing, Electrical, Carpentry, Plastering and Painting & Decorating - Level 1 Diploma



FUTURE CAREERS

Bench Joiner

Bricklayer

Designer & Surveyor

Electrician

Furniture Maker

Heating & Plumbing Engineer

Plumber

Roofer

Site Carpenter

Shop Fitter

Site Manager

OUR FACILITIES

Our workshop is well equipped with all you'll need to get started – from discovering vital skills in brickwork and maintenance to developing your knowledge of carpentry and joinery, we'll empower you to build a solid foundation for your future career.



CAREER SPOTLIGHT

Site Supervisor:
£25,000-£45,000*

Manages staff and subcontractors on building sites, ensuring safety and high standards.

Construction Manager:
£27,000-£65,000*

Organises building projects to ensure they're completed safely, within budget and on time.

*National Careers Service, 2023

INTRODUCING CONSTRUCTION

Our Constructions Skills courses offer entry level qualifications, designed to introduce you to construction and some of the different trades that you may be interested in pursuing.



EQUINE



Take the reins and pursue a career you're passionate about



Scan me to find out more about our courses



The equine industry is wide and varied, which means there are plenty of career opportunities.

And, if you want to work with horses, our equine courses will provide you with vital skills and qualifications.

All of our courses are practical, giving you hands-on experience working in our Equine Centre. You'll cover a range of topics, from learning the basics in horse care to gaining an in-depth knowledge of horse and yard management, as well as valuable scientific knowledge of equine anatomy and physiology ensuring you're able to maintain fit and healthy horses in your care.

COURSES

Equine

Equine - Level 1 Diploma

Equine Care
- Level 2 Technical Certificate

Equine Management - Level 3
Advanced Technical Diploma

Animal Management (Equine)
- Level 5 Higher National Diploma





FUTURE CAREERS

Competition Groom

Equine Nutritionist

Equine Physiotherapist

Public Services – Mounted Police
or British Army

Riding Holiday Leader

Riding Instructor

Saddler

Yard Manager



CAREER SPOTLIGHT

Horse Groom:
£12,000-£18,000*

Responsible for the care and welfare of horses, alongside the maintenance of stables and riding equipment.

Riding Instructor:
£14,000-£25,000*

Teaches children and adults, of all abilities, how to ride horses.

*National Careers Service, 2023

OUR STUDENTS SAY...

“Studying at Brinsbury and working with the variety of horses gave me the confidence and qualifications I needed to get the job I wanted.”

Laura, studied equine management

CHARITY EVENTS

Our students organise special equine events held at the college, as part of their courses, including charity days. And in April 2023, they raised money for the neighbouring Racehorse Sanctuary in Pulborough with a ‘Clear Round’ event.



OUR FACILITIES

Our Equine Centre is an established British Horse Society (BHS) approved training and examination centre.

It's home to our extensive stables, as well as indoor and outdoor arenas.

And whether you're exercising horses from the ground or under saddle, you'll also be able to enjoy the beautiful South Downs countryside.

FORRESTRY & ARBORICULTURE



Branch out with a
career that matches
your ambition



Scan me to
find out more
about our
courses



Experience the ideal learning environment for forestry and arboriculture at Brinsbury College, nestled on the edge of the South Downs with access to captivating woodlands across our estate in West Sussex.

The county has the second-highest woodland coverage in the country (19% of the land area).

And our courses offer exceptional opportunities to acquire the practical skills and theoretical knowledge needed to excel in this industry, while enjoying hands-on outdoor learning in an area renowned for its natural beauty.

COURSES

Forestry & Arboriculture

Forestry & Arboriculture
- Level 2 Technical Diploma





CAREER SPOTLIGHT

Arboriculture Officer:
£25,000-£40,000*

Manages and maintains trees for local councils and arboricultural contractors.

Tree Surgeon:
£20,000-£38,000*

Carries out tree work, including planting, cutting down, maintenance and hazard assessments.

*National Careers Service, 2023



OUR FACILITIES

Across the 540 acres of grounds that makes up Brinsbury College, you'll immerse yourself in the captivating world of woodland management as you master the art of climbing, felling, and nurturing these magnificent natural landscapes.

Discover the thrill of hands-on learning in an environment where theory meets practice.



FUTURE CAREERS

Arboriculture Consultant

Arboriculture Technician

Estate Worker

Grounds' Maintenance

Tree Surgeon

Utility Arboriculture

Woodland and Estate Manager

OUR STUDENTS SAY...

95%

of our arboriculture, horticulture, agriculture and farriery students said they were proud to be a student at Brinsbury College*

(*according to the 2023 Student Survey)

FURNITURE, UPHOLSTERY & SOFT FURNISHINGS



Unleash your creativity and **master the craft** of furniture making and upholstery



Scan me to
find out more
about our
courses

COURSES

Furniture Making

Furniture Occupations
- Level 2 Diploma

Wood Machining
- Level 2 Diploma

Furniture Design & Making
- Level 3 Diploma

Upholstery & Soft Furnishings

Furnishings (Soft Furnishings)
- Level 2 Diploma

Furnishings (Traditional
Upholstery) - Level 2 Diploma

Furniture Design & Making
- Level 3 Diploma



Apprenticeships
are also available!
Discover more
on p50

Our comprehensive courses delve into various techniques, equipping you with a diverse skill set essential for this craft.

With the guidance of our experienced tutors, you will acquire the expertise necessary to design and construct exceptional furniture pieces. Immerse yourself in a world of creativity and craftsmanship, where your passion and talent will flourish under our first-class instruction.





FUTURE CAREERS

Furniture Designer

Furniture Restorer

Furniture Maker

Product Technologist

Quality Control Inspector

Wood Machinist

Workshop Supervisor

OUR FACILITIES

You'll begin your creative journey in our dedicated upholstery and furniture workshops. With a wide range of tools and technologies at your disposal, you'll have everything you need to develop your skills and master your craft.



OUR STUDENTS SAY...

“The tutors are so supportive and so willing to share – just teaching you to be the best that you can be.”

Emily, studied furniture-making

ROYAL HONOUR

Chichester College Group received a Queen’s Anniversary Prize for Education in 2021, in recognition of its internationally renowned work in furniture and upholstery training.

The Queen’s Anniversary Prizes are the highest national honours awarded in UK further and higher education – and CCG is among only 52 further education college recipients of the 296 prizes awarded since the programme started nearly 30 years ago.

CAREER SPOTLIGHT

Furniture Maker:
£20,000-£28,000*

Makes and restores furniture items, such as chairs, tables, cabinets and beds.

*National Careers Service, 2023



HORTICULTURE



Plant the seeds
to your success



Scan me to
find out more
about our
courses

COURSES

Horticulture

Practical Horticulture Skills
- Level 1 Diploma

Practical Horticulture Skills
- Level 2 Diploma

Agriculture, Land Management
& Production (Crop and Plant
Production) - Level 3 T Level

RHS Courses

RHS Principles of Horticulture
- Level 2

RHS Practical Horticulture
- Level 2



Find out more about
T Levels on p46



Apprenticeships
are also available!
Discover more on p50

Embrace the opportunity to study in one of the UK's foremost counties for production horticulture - West Sussex. With its rich horticultural heritage and thriving industry, this is the perfect location to embark on your horticulture journey.

At Brinsbury College, our dedicated tutors, with their extensive experience across various horticulture sectors, will guide you towards success. Gain comprehensive knowledge and skills in plant management, grounds maintenance, and horticulture production, opening doors to a wide array of employment and progression prospects in this vibrant and lucrative industry.

Prepare to flourish in the dynamic world of horticulture.





OUR FACILITIES

Your classrooms will extend beyond walls, as you'll explore our greenhouses, gardens and vast grounds. Put your training to the test and cultivate your skills.

We have a variety of growing technologies, from aeroponics, to hydroponics, automated systems and laboratories. Perfect to learn up-to-date methods and be exposed to industry technologies.

FUTURE CAREERS

Garden Designer

Landscape Architect

Horticulture Technician

Landscaper

Horticulture Therapist

Plant Health Inspector



AWARD-WINNING DESIGNS

Our students have won an array of awards over the years – most recently claiming prestigious prizes at the South of England Show for best garden design!



CAREER SPOTLIGHT

Gardener:
£16,000-£25,000*

Grows and looks after plants in private and public green spaces.

Landscape Architect:
£20,055-£45,000*

Plans, designs and manages the landscapes we live, work and play in.

*National Careers Service, 2023



OUR STUDENTS SAY...

“Brinsbury really helped me as it was the first place to show me that horticulture was a viable career. It gave me the confidence to launch my own business properly.”

Eleanor, studied horticulture

T LEVELS



The next level
qualification



Scan me to
find out more
about our
T Levels

COURSES

Agriculture, Environmental & Animal Care

Agriculture, Land
Management & Production

Animal Care and Management

Our courses are correct at time
of printing (Aug 23) and are
subject to change

T-LEVELS

THE NEXT LEVEL QUALIFICATION

**T Levels are technical
qualifications designed
to help you get ahead
in your dream career.**

Equivalent to three A-levels, they combine the career focus and practical elements of technical qualifications with classroom-based learning and industry placements – a key element of all T Level courses.

They'll provide you with a clear route into skilled employment, university or degree-level employment.

93%
PASS RATE

for T Level students across
Chichester College Group
(based on 2023 year 2
results for Chichester
and Crawley Colleges)





WHY SHOULD I CHOOSE A T LEVEL?

You'll develop the practical skills needed for your chosen career

You'll experience what the job involves

You'll gain knowledge of your chosen sector

You'll achieve a technical level 3 qualification, equivalent to three A-levels

You can build a relationship with potential employers

You'll have the option to progress into higher level study

HOW ARE T LEVELS TAUGHT?

During your two-year course, you'll spend 80% of your time in the classroom and 20% of your time on industry placement.

HOW WILL I BE ASSESSED?

You'll be assessed through exams, coursework, workplace observations, an employer-set project and an end-point assessment.

WHAT ARE THE ENTRY REQUIREMENTS?

You'll need at least five GCSEs at grade 4 or above, including English and maths. For some T Levels, you may also need to achieve a minimum of grade 4 in relevant subjects.

WHAT IS AN INDUSTRY PLACEMENT?

Your industry placement will give you vital work experience and it's an essential part of the T Level qualification.

You'll complete between 45-60 days in an industry placement over the duration of your two-year course.

This means you'll gain an in-depth experience which will help you to develop the crucial workplace skills that employers are looking for. You'll also discover what the job you want to do really involves.

It's also an opportunity to develop a relationship with your industry placement employer, giving you the potential to get a foot in the door to your future career!

T LEVEL STUDENTS SAY...

"My T Level has been good - a mix of practical and theory. The industry placement was brilliant!"

Lucas, T Level student at Chichester College

FIND OUT MORE

If you have any questions about T Levels, get in touch. Email us at t-levels@chigroup.ac.uk





APPRENTICESHIPS

EARN WHILE YOU LEARN

An apprenticeship is a great way to earn money, gain real work experience and achieve a nationally recognised qualification in your chosen industry.

Across the Chichester College Group, we offer a wide range of apprenticeship programmes including intermediate, advanced and higher levels in a huge variety of industries – so if you don't see what you're looking for here at Brinsbury College, we may offer it at one of our other colleges.

We're one of the largest providers of apprenticeships in the region, and our consistently high achievement rates give you the assurance that you'll receive high quality training and support with us.

KEY FACTS ABOUT APPRENTICESHIPS

1 It's a real job

You'll be treated just like a regular employee of the company with a contract of employment, salary and employee benefits such as holiday and sick leave.

2 There's no age limit

Anyone over the age of 16 is eligible to become an apprentice, whether you're employed, unemployed or leaving school.

3 You can choose from a wide range of apprenticeships

There are more than 80 different apprenticeships for you to choose from, across a range of levels, so you can be sure you're heading towards the right career path for you.

SPEAK TO US

To apply for an apprenticeship or to find out more, please contact our apprenticeship team:

Call: **01243 812948**

Email: apprenticeships@chigroup.ac.uk

You can also visit our website for more information: brinsbury.ac.uk/apprenticeships

DISCOVER MORE

apprenticeships at our other colleges, visit: chigroup.ac.uk/apprenticeships



STUDY AN APPRENTICESHIP IN:

Agriculture & Environment

Horticulture & Landscape
Operative Level 2



Scan me to
find out more



OUR STUDENTS SAY...

"I would definitely recommend choosing an apprenticeship to anyone as it is a good way to process the education side of it whilst being on the job.

You are always super busy and do not get a moment of being bored or struggling with doing the same routine."

Lucy, horticulture and landscape apprentice

HIGHER EDUCATION

CHOOSE ONE OF OUR UNIVERSITY-LEVEL COURSES

You can continue your study journey with one of our degree level courses, offered at a number of Chichester College Group colleges including Brinsbury College.

There are a range of higher education options available to you, and our courses are developed in consultation with industry experts and delivered in our industry-standard facilities.

Across the group*, we offer courses in a variety of subjects, including:

- > Animal Management & Care
- > Arts (Fine Art, Textiles & Fashion)
- > Business & Management
- > Computing & Digital Technology
- > Construction
- > Creative Media
- > Digital Media (Graphics, Illustration & Photography)
- > Engineering & Technology
- > Healthcare Practice
- > Motorsport
- > Music (Performance and Production)
- > Technical Theatre
- > Theatre Performance & Dance
- > Sport, Exercise & Health Science

* Please note, not all courses are offered at all of our campuses. Visit our website for more information.

** QS World University Rankings 2023.

*** Correct at time of printing for students completing a level 3 qualification in June 2023. Progression Promise Guarantee may change for future students.



Find out more about our HE provisions on our websites, or check out our Higher Education guide



SMALL TEACHING GROUPS AND INDIVIDUAL SUPPORT

Many of our higher education courses are taught in small groups, and benefit from the support of teachers and student services.

COURSES VALIDATED BY LEADING UNIVERSITIES

Creative degrees at Northbrook College are validated by the prestigious University of the Arts London (UAL) – ranked second in the world for art and design**.

Other degree level, foundation and top-up degrees are validated or awarded by the University of Brighton, University of Chichester or the University of Portsmouth.

These universities oversee the standards of teaching, ensuring a high quality learning experience.

PROGRESSION PROMISE GUARANTEE***

We're here to support our students – and we make a promise to students studying a level 3 course at any Chichester College Group college who wishes to progress on to one of our HE courses.

You'll receive a guaranteed interview for a university level course and you could qualify for a one-off bursary to use towards your study costs. If we are your only choice of institution, you can apply directly to us with no application fee.*

ACCESS TO

HIGHER EDUCATION

Fast track to Higher Education:
Prepare, Focus, Progress



Our Access to Higher Education (HE) courses are designed to inspire passion in your subject, build your confidence and put you at ease with achieving university-level standards.

Access to HE courses are accepted by UK universities and are an ideal route to university for 19+ students who do not have A-levels or level 3 qualifications in relevant subjects.

OUR ACCESS COURSES

Across Chichester College Group, we offer Access courses in:

> Applied Science	B
> Computing	B C
> Engineering	C
> Environmental Science	C
> Healthcare Professions	C C
> Humanities (English, History & Philosophy)*	C
> Humanities & Social Science	B C W
> Medical Science	C
> Nursing & Healthcare Professions	B W
> Psychology and Counselling	B
> Science	C
> Sport Science	C
> Pre-Access Award in Skills for Professions in Health & Social Care	B

DISCOVER MORE

Visit our websites:

www.brightonmet.ac.uk
www.chichester.ac.uk
www.crawley.ac.uk
www.worthing.ac.uk

*These courses are now delivered through a combination of remote, evening classes with face-to-face teaching on one Saturday every half-term.

B Brighton MET **C** Chichester
C Crawley **W** Worthing

MATHS & ENGLISH

We'll support you to retake your exams if needed

Maths and English skills are important to employers, and may be a key requirement if you want to progress onto other courses after college – or even for the course you want to do at college.

If you don't achieve (or haven't already achieved) a grade 4 or above in GCSE maths and/or English, we'll support you to retake your exams with study sessions and tutoring built into your study programme on allocated days in your timetable.

Some courses, such as T Levels, may require you to have achieved grade 4 or above in maths and/or English before you start your course – but don't worry. Speak to our advisors and we'll find the right path to support you.

AT OUR OTHER COLLEGES

While we don't offer an additional provision of maths and English GCSE courses for adult students (19+) or ESOL (English for Speakers of Other Languages) courses at Brinsbury, you will find this provision at our sister colleges across the group including Chichester College, Crawley College and Worthing College.





SEND FOUNDATION PROGRAMMES

COURSES

Personal Progress 1

Personal Progress 2

Towards Independence

Independence +1

Independence +2

Skills +1

Skills +2

Vocation +

Supported Internship



Scan me to find out more about our SEND Foundation Programmes

Our SEND (Special Educational Needs & Disabilities) Foundation Programmes will support you in your steps towards independence, employment or further academic studies.

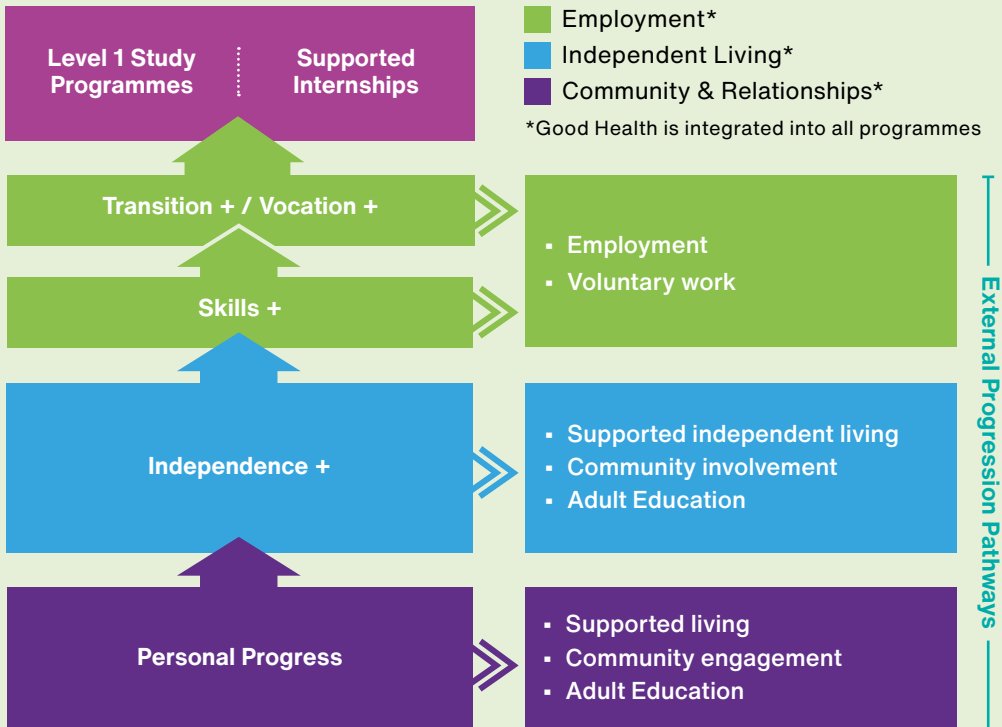
We offer a variety of routes focusing on becoming more independent and/or progressing towards employment.

Our study programmes will enable you to progress towards your intended destination; building personal, social and work readiness skills that are vital for your future.

Dedicated staff will also provide individual and small group support, and you'll also get experience of working with others and learning how to deal effectively with everyday situations.

Within Foundation Programmes our professional team use a range of specialist, tailored interventions to meet the individual needs of our students.

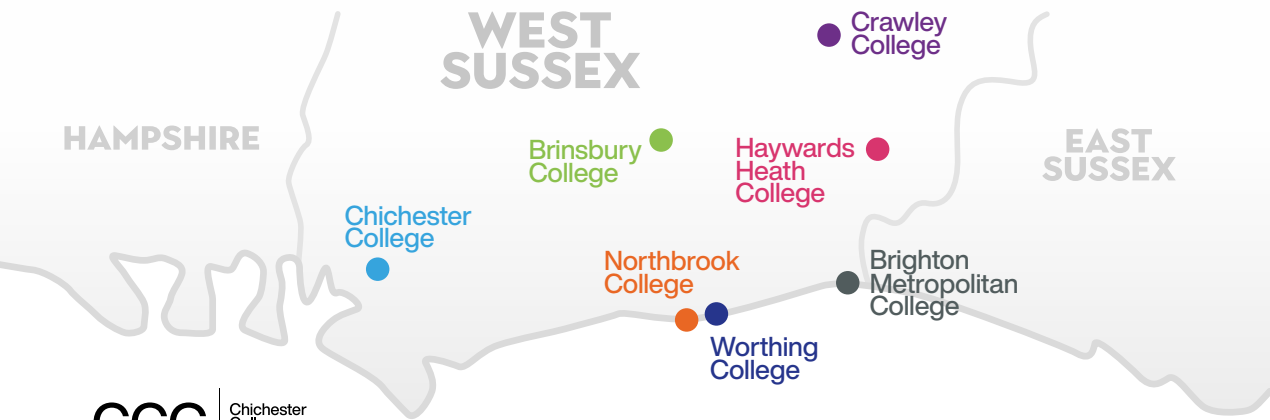
PREPARING FOR ADULTHOOD PROGRESSION



This diagram outlines the courses we offer and shows how you can continue your studies at college or progress to independence, employment or further study.

YOU'RE PART OF SOMETHING BIGGER

CHICHESTER COLLEGE GROUP



CCG | Chichester
College
Group

NOT FOUND WHAT YOU'RE LOOKING FOR?

Don't worry – we've got lots of alternative options at our other Chichester College Group colleges, where you'll be assured that you'll receive the same fantastic level of support and tuition as you'd experience here.

That's because when you choose to study at Brinsbury College, you're choosing to be part of something bigger. We combine our extensive expertise, knowledge, resources and passion for education, to support our students and our communities – if you choose a Chichester College Group college, you can be assured you'll be at the very heart of all that we do.



BRIGHTON MET COLLEGE

MET Brighton
Metropolitan
College

brightonmet.ac.uk

A diverse, vibrant college set across two specialist campuses – Central Brighton and East Brighton – you'll have a wide variety of vocational options available to you. With modern facilities, state-of-the-art workshops, new hair & beauty salons and a specialist Construction and Trades Centre – you'll find everything you need.

CHICHESTER COLLEGE

 Chichester
College

chichester.ac.uk

You'll be spoilt for choice at Chichester College, home to a wide-ranging variety of academic and vocational subjects, including A-levels and T Levels – all delivered in specialist, industry-standard facilities supported by a passionate community of lecturers and teaching staff.

CRAWLEY COLLEGE

 Crawley
College

crawley.ac.uk

You'll discover a range of practical, hands-on courses at Crawley College. It's at the cutting-edge of training with new immersive spaces, launching October 2023, which use augmented reality, virtual reality and extended reality to simulate real-life environments to enhance and expand learning opportunities!

HAYWARDS HEATH COLLEGE

 Haywards
Heath
College

haywardsheath.ac.uk

You'll feel like you're part of a thriving community at Haywards Heath College. With an extensive selection of A-level courses to choose from, you'll enjoy learning in a modern college that has a big heart, with fresh purpose-built classrooms!

 Northbrook
College

NORTHBROOK COLLEGE

northbrook.ac.uk

Your imagination is your only limitation at Northbrook College. A wide range of courses are available across our three campuses including creative university-level degree courses that are validated by the prestigious University of the Arts London. From state-of-the-art creative industries facilities at West Durrington, industry-standard training facilities at Broadwater to our specialist aircraft and motor vehicle campus at Shoreham Airport, you'll be in the fast lane to your future success!

 Worthing
College

WORTHING COLLEGE

worthing.ac.uk

A strong academic focus awaits at Worthing College, which is also known for its successful sporting community with a number of titles and links to top clubs including Harlequins Women's Rugby. The college offers a huge variety of A-levels, with a small selection of vocational options too.

KEY DATES

To help you navigate the next year, here's a handy timeline which outlines what you can expect

OCTOBER-NOVEMBER 2023

We hold open events during the autumn term, offering a great opportunity to explore your options, chat to our friendly staff and tour our facilities before submitting your application.

DECEMBER 2023 ONWARDS

After you've applied, we'll invite you in for an interview. This is just to chat through your application, provide guidance to ensure the courses you've applied for are right for you – nothing to worry about. Interviews will take place throughout the year.

MARCH 2024

We hold more open events in March, providing another opportunity to take a look around the college and talk to us about your options.

MAY-JUNE 2024

You're likely to be sitting your exams, so good luck! Remember to keep calm and know that we'll be here to support you when you leave school.

JUNE 2024

We'll email you asking you to pre-enrol at the college. Don't worry, this is a simple online form which will help us prepare for your arrival at the start of the Autumn Term.

AUGUST 2024

At the start of the month, we'll email you with your enrolment appointment and start date.

You'll receive your GCSE results this month. We very much hope you get the grades you want, but if you don't - don't panic! Contact us and we'll support you in your next steps.

AUGUST-SEPTEMBER 2024

You'll be invited to attend enrolment, which is when you'll officially sign up as a Brinsbury College student!

SEPTEMBER 2024

Welcome to college and the next exciting chapter of your life!

GET IN TOUCH

If you have any questions or concerns, our admissions team will be happy to help you.

📞 01243 786321

✉️ admissions@chichester.ac.uk

EVERYTHING ELSE YOU NEED TO KNOW

Choosing your course is a big decision, but you also need to choose the right college for you.

Here at Brinsbury, we offer a range of support services and opportunities, designed to enhance and expand your experience with us.

On the following pages, you'll find information about the whole college experience!



Financial Help	62
Course Fees	63
Supporting You	64
Additional Learning Support	66
Preparing You for Your Future	68
Our Campus	70
Our Facilities	72
Student Life	74
Your College, Your Voice	76
How to Find Us	78
College Highlights	79
Open Events	Back cover

FINANCIAL HELP

We're here to help you get the financial support you need

Our Student Finance Team can provide you with specific advice and information about grants that may be available to you.

CONTACT US

To find out more, contact our team by email:
studentfinance@chigroup.ac.uk

Or, call the college on 01243 786321 and ask to speak to the Student Finance Team.



LEARNING SUPPORT GRANT & BURSARY

This is our bursaries scheme for 16 to 18 year olds. This grant is funded by the Education Funding Agency and administered by the college.

This grant could provide you with:

- > Access to free or subsidised travel
- > Free or subsidised equipment, books or resources
- > Free or subsidised childcare
- > Free UCAS admin fees
- > Free college meals
- > Contribution towards enrichment activities linked to your course

If you're aged 16 to 18 and are currently in care, just leaving care, receive Income Support or Universal Credit, or receive ESA (Employment Support Allowance) or Universal Credit and PIP (Personal Independence Payments), you may be eligible for the Vulnerable Bursary via the Learning Support Grant

Financial help is also available for students aged 19 or over.

ADVANCED LEARNER LOAN

If you're thinking of progressing onto a full-time course and are aged over 19, you may qualify for this loan.

To be eligible, you must:

- > Be aged 19 or over at the start of your course
- > Be a UK or Irish national, or have settled or pre-settled status under the EU Settlement Scheme or indefinite leave to remain
- > Be applying to study on a course which is level 3[†] or higher

For more information, including rules and guidelines for applying, visit the Advanced Learner Loan website: gov.uk/advanced-learner-loan

[†] Defined by the government as a maximum of three A-levels; Access to HE course; Level 3 and/or level 4 certificates or diplomas; an advanced or higher apprenticeship.

COURSE FEES

IF YOU'RE 16-18

If you're a home student⁺ and are under 19 at the beginning of your courses, you won't have to pay tuition or exam fees for most courses. You will have to pay exams if you need to resit an exam.

You may need to pay for course equipment and materials. You'll be advised of this at your interview.

IF YOU'RE 19 OR OVER

You will generally be asked to pay tuition or exam fees, although you may be eligible to receive help with course fees.

If you don't hold a level 2 qualification (such as five GCSEs at grades 9-4/A*-C) or a level 3 qualification (e.g. two A-levels) and are under 24 years old, you may be able to get a substantial reduction in fees.

If you select a course leading to a basic skill qualification (maths or English), there will be no tuition fees to pay.

You may also be eligible for free or discounted courses at entry level or level 1, if you're aiming for a full level 2 course, do not already hold a qualification at this level and are under 24 years old. Also, if you're studying at level 2 or below and are unemployed, or on a low wage, you may be eligible for a substantial reduction in fees.

INTERNATIONAL STUDENTS

International students should contact our International Department for fee information on:

 +44 (0)1243 786321

REFUNDS

Courses lasting longer than 12 weeks:

If you choose to leave your course within 28 days of it starting and the course is longer than a term, a refund may be made of the fees paid, minus a £50 administration charge along with any payments made to examining or other bodies that cannot be reclaimed by the college. If you choose to leave your course more than 28 days after the course start date, you will be liable for the full cost of the course.

If you have an Advanced Learner Loan, payments to the college will stop at the point of your withdrawal. You'll therefore become liable for any fees still outstanding.

Courses which are under 12 weeks:

If you're booked on a short course and cancel at least 14 days before the course start date you will receive a refund of the course fee minus a £50 administration fee. If you cancel with less than 14 days' notice or leave the course after it has started, no refund will be given.

Exceptional circumstances

Where there are exceptional personal circumstances, an application for a refund may be made to this email: salesledger@chichester.ac.uk with supporting evidence.

If a course is cancelled by the college, you'll receive a full refund of fees paid.

⁺ Home students are people who have already lived in the UK or EEA for a minimum of three years for reasons other than education. If you are an EEA national, you must have obtained either pre-settled or settled status under the EU Settlement Scheme.

SUPPORTING YOU



We want you to succeed, and to get as much as possible out of your time with us. Our friendly teams are available to help you in lots of different ways.

You'll also have a dedicated study programme to help you develop – academically, practically and personally.

STUDY PROGRAMME

At Brinsbury College, we provide you with more than just your chosen qualification. If you're aged 16-19, you'll have a specialised study programme.

This includes work experience and pastoral support, as well as development of your employability skills.

If you haven't achieved a grade 4 or above in maths and/or English, you'll also be supported as you work towards this (find out more on page 55).

PASTORAL SUPPORT TUTORS

While at college, you'll be supported by your pastoral support tutor. Every student, aged 16-19, has a tutor who will provide you with 1:1 support for your personal development.

You'll attend regular interactive workshops, which have been developed to cultivate your knowledge and understanding of the world around you. Topical discussions could include environmental issues, respect and tolerance, health, money management as well as keeping safe online.

Your tutor will also be a point of contact for you if you need extra help or have a concern that could be affecting your time at college and will be able to offer information about support services both at college and outside of college.

WORK EXPERIENCE

All of our students have the opportunity to take part in work experience or work-related learning. This helps you become 'work ready' and looks great on your CV.

It also gives you valuable insight into the world of work and could help you to decide on your future career path.



WELLBEING & SAFEGUARDING

Your physical and mental wellbeing, as well as your safety, is extremely important. We have the strongest commitment to making sure our students experience a welcoming, safe and secure environment and we have robust policies and procedures in place to safeguard you.

Our College Community Support Officer and Student Wellbeing Co-ordinator are on-site to help you stay safe, and we have a number of drop-in services offering help and support.

ADDITIONAL LEARNING SUPPORT

HELPING YOU GET THE SUPPORT YOU NEED TO THRIVE AT COLLEGE

If you need extra help with your studies, our Additional Support Team can help you and your lecturers tailor support to aid in moving you towards independence.

This could include providing in-class or out-of-class support for literacy, numeracy and study skills, working with a Learning Support Assistant (LSA) in class or Communication Support Worker (CSW).



SPECIALIST SUPPORT

Specialist support is available for students with additional needs, including neurodiverse conditions such as Dyslexia, as well as learning and physical disabilities.

We offer a range of adaptive equipment and software for students with hearing or visual impairments.

Facilities such as ramps, hoists, lifts and specialised toilets are available.

Please talk to us about your support needs as soon as possible, so we can discuss your requirements to help you study and achieve on your course.

You are also very welcome to visit the college, meet with our staff and view our facilities.

ASC PROVISION

Social and communication skills are an essential part of everyday life, and we have experienced and qualified lecturers on hand to teach social and communication skills in structured sessions and workshops.

EXAM SUPPORT

We know some students will require special arrangements when taking exams and support can be provided, in accordance with awarding bodies' guidelines. Dependent on your assessment results, scribes and readers may be available, and assistive equipment may be borrowed.

YOUNG PEOPLE WHO ARE 'CARE EXPERIENCED'

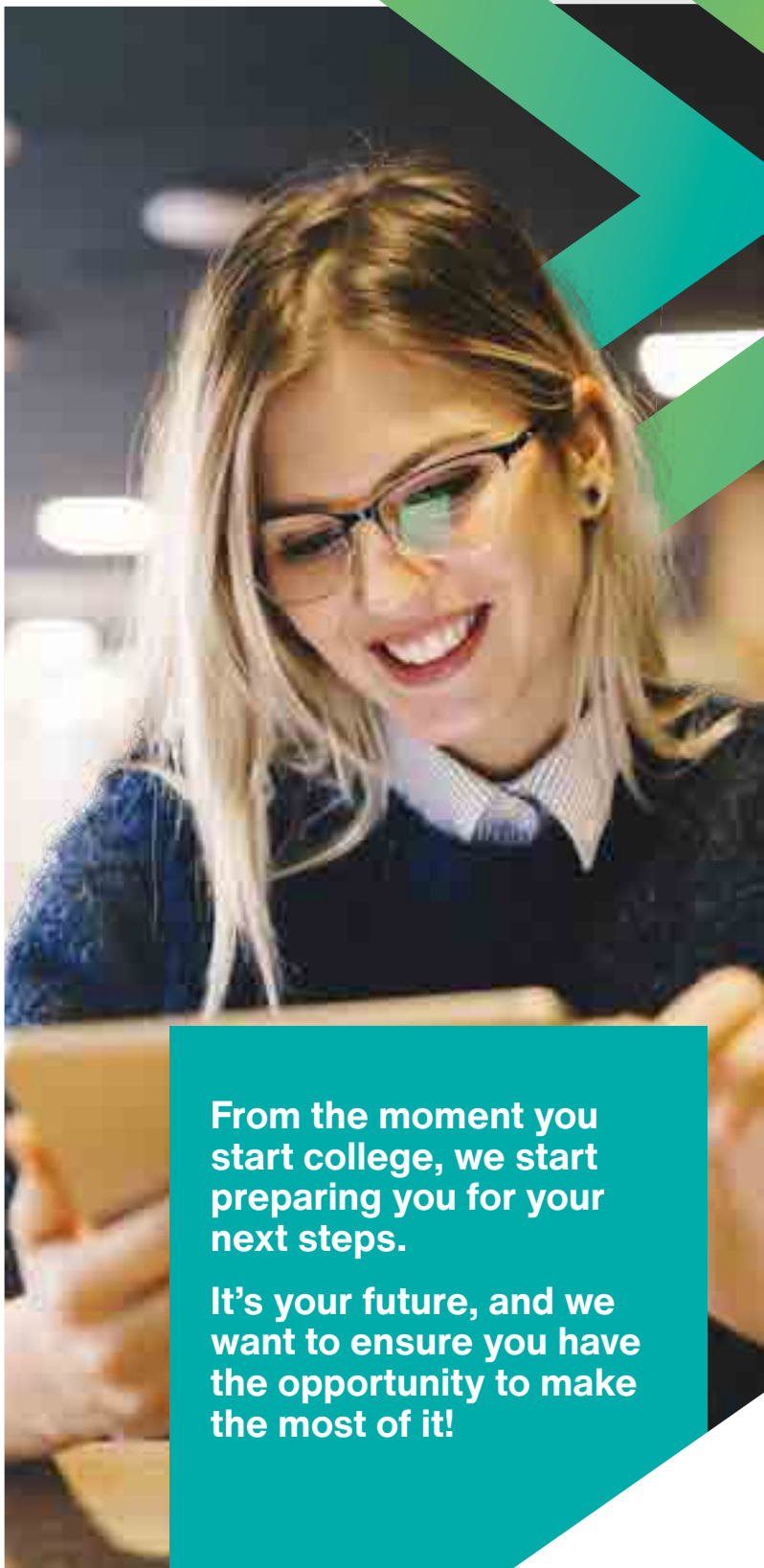
We have additional support in place for young people who are care experienced, as well as young refugees and asylum seekers to assist their transition and journey through college.



GET IN TOUCH

For more information, please contact 01243 786321 and ask to speak to our Additional Support Team.

PREPARING FOR YOUR FUTURE



From the moment you start college, we start preparing you for your next steps.

It's your future, and we want to ensure you have the opportunity to make the most of it!

Our careers team in Progression+ are here to help.

CAREERS GUIDANCE

Take advantage of a one-to-one careers guidance meeting with one of our advisors. They'll help you to explore your options and can offer tailored, impartial advice that's individual to you.

The team will also help you to:

- > Identify your skills
- > Write a CV
- > Learn how to search for jobs
- > Develop your interview techniques
- > Promote yourself

CAREERS INFORMATION

We provide access to careers and higher education fairs, as well as arrange talks, visits and guest speakers – all designed to demonstrate the choices available to you.

We'll also deliver workshops that will help you to develop life skills that will prepare you for future work or study.

CAREER COACH

Use Career Coach – an online resource – to assess your skills and see how you match up with a potential career, build your CV and research career information. You'll even find information on relevant courses and jobs to help you reach your career goals.

Visit our website – brinsbury.ac.uk – and search 'Career Coach' to find out more.



SPEAK TO US

 01243 786321 ext 2539

 progressionplus@chichester.ac.uk

OUR CAMPUS

Set in 570 acres of stunning countryside on the edge of the South Downs, Brinsbury College is a stunning college with a community feel





Brinsbury College is home to a working farm, animal care centre, forge and stables as well as large areas of woodland.

FEELING HUNGRY?

Our Sussex Restaurant is the perfect place to grab a bite to eat or enjoy a Costa coffee.

RELAX AND SPEND TIME WITH FRIENDS

Our Student Union space is ideal to spend time with friends, play some games and relax at lunchtimes or between classes.

ACCOMMODATION

There are accommodation options available if you don't live nearby, including halls of residence at Chichester College (one of our sister colleges). Contact the team to find out more: accommodation@chichester.ac.uk

ABOUT THE AREA

Brinsbury College is around three miles from Pulborough, a good 10 minute drive.

But you'll find plenty of areas around the college's large campus to relax between classes, or enjoy study time in our busy library and Learning Resource Centre.

You can also enjoy walks through our attractive and extensive grounds.

Bus routes run close to the college, and the nearest train station is around 10 minutes away by car (see page 78 for directions and more information).



OUR FACILITIES





Across our campus, we give you the opportunity to study in a whole host of specialist classrooms – all creating the ideal learning environment!

LIBRARY & LEARNING RESOURCE CENTRE

Our Library & Learning Resource Centre provide all the facilities you'll need to get ahead. There's also always someone on hand to help if you need it. Printing and scanning facilities are also available, along with a number of computers and workstations.

WORKING FARM

Our farm is home to our bespoke agricultural teaching centre including state-of-the-art milking parlour, as well as range of livestock including an award-winning dairy herd.

ANIMAL CENTRE

Our modern, purpose-built Animal Centre houses a large teaching collection of animals, including tropical and arid reptiles, invertebrates, amphibians and exotic mammals, as well as alpaca (including three crias born in May 2023), goats, sheep and donkeys.

EQUINE CENTRE

Our Equine Centre is a British Horse Centre approved training and examination facility, with indoor stabling and an indoor arena and outdoor all-weather arenas.

STABLE FACILITIES

Did you know we offer stable facilities for loan horses? Horses are well cared for by our team of qualified staff and dedicated equine students, receiving regular exercise.

The site has 24 hour security and receives regular license inspections by Horsham District Council with the college exceeding many of the standards set. For more information, please contact rachel.speed@chichester.ac.uk

DISTINGUISHED DOGS

Our commercial dog grooming parlour is open to the public. Our students, under the careful supervision of our experienced lecturing team, provide advice and grooming services at competitive prices.

FORGE

Our state-of-the-art forge combines cutting-edge technology with traditional tools to give our blacksmith and farriery students full grounding in the skills they'll need to thrive. It also offers a range of part-time courses and Saturday sessions, including crafting small garden items or Christmas decorations. You can find out more on our website.



STUDENT LIFE

MORE THAN AN EDUCATION, IT'S A WAY OF LIFE

College is about more than studying, it's also about discovering new things, making new friends and being part of something bigger.

You'll have loads of opportunities to get involved with activities which will enrich your time at college.

TRAVEL

Our Student Experience Team arrange days out and trips throughout the year, from Thorpe Park to the Harry Potter Studios.

If that's not enough, we also organise trips abroad. Our annual visit to Disneyland Paris is always popular! You can also be a volunteer abroad, joining in with turtle conservation efforts in Greece or our work with the Walk Centre in Kenya.

ACTIVITIES & CLUBS

Our Student Experience Team are here to make sure you have the opportunity to access to all kinds of activities that will stretch and challenge you, as well as help you to find your tribe.

Activities across the group range from scuba diving to rock climbing, from beginner's guitar lessons to 'Dungeons & Dragons' groups. Learn to knit if that is your thing or join our active LGBTQIA+ groups.

If we don't already run the session you are looking for then talk to your Student Experience Coordinator and they'll help to explore the ideas with you further. We're always on the lookout for great ideas.

As part of our Xtra programme, we also organise fundraising activities throughout the year and college wide activities – from our annual Freshers' Fair to Eco-Swap events. Come and join us in supporting the effort to raise money and awareness for some very worthwhile causes.



YOUR VOICE YOUR COLLEGE



STUDENT VOICE IS EMBEDDED IN ALL THAT WE DO





We want to ensure you get the best experience possible. That's why our student union is so important to us and we make sure your voice is heard at every level.

BRINSBURY STUDENT UNION

As a student at Brinsbury College, you automatically become a member of our student union – and it's up to you just how involved you want to be.

With an elected Student President and a team of student executives, the Brinsbury Student Union plays an incredibly important role in all college decisions.

Follow the Brinsbury Student Union on:

-  @BrinsburySU
-  @BrinsburySU
-  @studentunionccg
-  @BrinsburySU



STUDENT EXECUTIVE

The Student Executive Team is made up of a small number of course reps and are the student leaders of the college.

The Executive – or ‘exec’ – are led by the Student President and meet regularly to discuss key issues and support the running of the Brinsbury Student Union.

They also come together with the student executives from all Chichester College Group colleges to talk about issues impacting the whole group, working together to champion student voice and talk to senior leaders at the group.

STUDENT PRESIDENT

In June, student elections are held to decide who will take the mantle of Student President for the following academic year.

Your Student President represents you and is the spokesperson of the students. They meet regularly with the principal and governing body to provide valuable feedback on issues facing students at the college, helping to influence the decisions being made at the highest levels.

COURSE REPRESENTATIVES

Every course at college has a student representative – it’s a great role to take on. Representatives – or ‘reps’ are elected during the third week of the first term and will serve the students on their course by gathering feedback and attending student conferences, delivering the views of your classmates directly to college management.

Course reps also meet regularly with heads of learning to discuss issues that are particular to their area. Anyone can put themselves forward and courses will vote to elect their rep.



HOW TO FIND US

Getting to Brinsbury College has never been easier



CATCH THE BUS

We offer three dedicated bus routes, from Chichester, Crawley and Shoreham, to take you right to the campus' doorstep. They'll help you to reach our stunning countryside campus in the cheapest and easiest way possible.

Route 1: From Shoreham

Our Route 1 service starts in Shoreham, stopping at Lancing, Worthing Pier, Broadwater, Findon Valley, Findon, Washington and Ashington.

Route 2: From Crawley

Our Route 2 service starts in Crawley, stopping at Broadfield, Horsham, Broadbridge Heath, Southwater and Billingshurst.

Route 3: From Chichester

Our Route 3 service starts in Chichester, stopping at North Bersted, Bognor Regis, Felpham, Littlehampton, Wick and Arundel.

You'll find all the latest information about our bus services, including schedules, prices and ticket information on our website: www.brinsbury.ac.uk/bus



TAKE THE TRAIN


Brinsbury is easily reached by train, via Pulborough Station – just three miles south of the campus. A dedicated bus shuttle service runs to and from the campus at peak-times (term-time only). A small fee does apply.



COME BY CAR

Brinsbury is located on the A29 between Pulborough and Billingshurst. On-site parking, with low daily charges, is available, but spaces are in high demand and not guaranteed.

You'll need to pre-register your car to access an E-Permit, and parking can be paid for by the day, via an app, or termly via our online shop. Visit www.brinsbury.ac.uk/studentparking for more information.

 Brinsbury College
North Heath
Pulborough
West Sussex
RH20 1DL

 01243 786321

 info@chichester.ac.uk

 brinsbury.ac.uk

*Please note, parking and travel information is correct at the time of publication but may be subject to change



OPEN EVENTS



01243 786321
info@chichester.ac.uk
brinsbury.ac.uk

Saturday 14 October 2023
10am-1pm

Saturday 9 March 2024
10am-1pm



We look forward to welcoming you at one of our open events. For more information scan the QR code or visit:

brinsbury.ac.uk/open

Proud to be part of

